

## PUBLIC MEETINGS

### First Public Meeting

The first public meeting, as part of the REA process, for the Romney Wind Energy Centre was held on October 26 and 27, 2016 in Chatham Kent (Tilbury) and Lakeshore (Comber), and was a great opportunity for the community to learn about the project, meet the team, ask questions and leave their comments.

According to the feedback forms submitted by 15 local citizens, the environment and the project configuration were the issues of most interest expressed by the attendees. Most participants indicated that they were pleased with the information provided by members of the project team in attendance, which included

our environmental consultants, construction and electrical teams, development manager, and stakeholder relations personnel.

A full copy of the First Public Meeting boards is available at: <http://www.edf-en.ca/project/romney/>

### Second Public Meeting Scheduled

If you didn't have a chance to attend the last open house, or if you would like to keep following the project progress, don't miss the opportunity to participate in the Second Public Meeting. This is a chance for you to learn more about the project, share your interests or concerns and see all the project infrastructure. The team will be glad to provide project updates and answer questions.

## Second Public Meeting

**WEDNESDAY, JUNE 7, 2017**  
**5:00 - 8:00 PM**

Tilbury Arena Ryder Hall  
55 Bond Ave  
Tilbury, ON, N0P 2L0

**THURSDAY, JUNE 8, 2017**  
**5:00 - 8:00 PM**

Comber and District  
7100 Community Centre Street  
Comber, ON



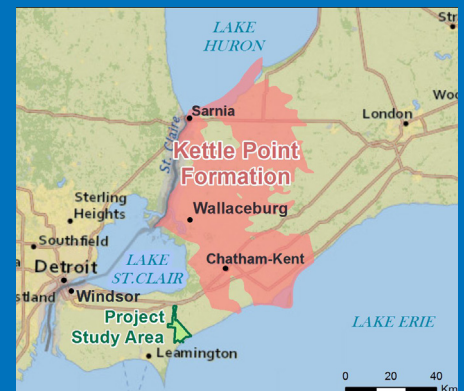
## WHAT ABOUT WATER WELLS?

Residents near Wallaceburg are concerned that driving piles for turbine foundations could disrupt the aquifer that sits upon kettle black shale causing turbidity and other issues for their water wells.

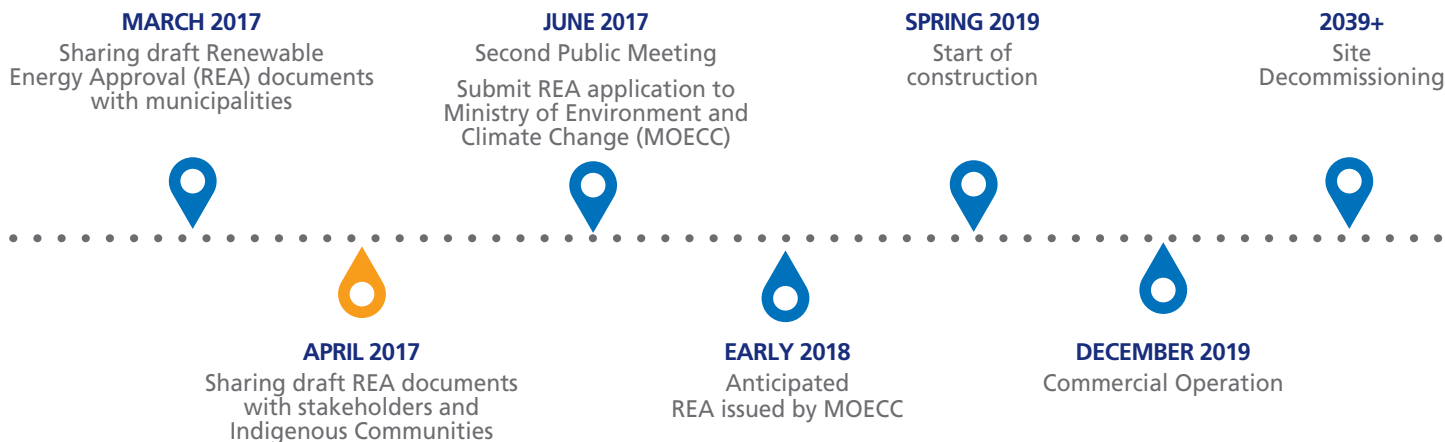
Given this concern, the engineering team for the Romney Wind Energy Centre examined the issue closely and has conducted a geotechnical site investigation at every proposed turbine location. The results show that this is not a concern for three main reasons:

1. The Romney project area is not located on the kettle black shale geological formation. (see map opposite)
2. Geotechnical tests at every proposed wind turbine location show that piles will not be required.
3. The project area is served by municipal water supply and residents have access to mains water.

**However if you do have any questions about water wells, please do not hesitate to contact us for further discussion.**



The current plan for 2017 is to complete our environmental surveys and host our Second Public Meeting before submitting an Application to the Ministry of Environment and Climate Change (MOECC) in late June or July. A decision from the MOECC is anticipated to be received mid-2018 and construction is expected in 2019. The project team will reach out to local stakeholders closer to construction time on opportunities for providing goods and services.



## REA REPORTS

In the past few months, the project team along with environmental consultant DNV GL, have completed several studies and draft Renewable Energy Approval (REA) documents to support the REA Application, which is expected to be submitted in the summer of 2017. The draft REA documents can be consulted at:

<http://www.edf-en.ca/project/romney-wind-energy-centre/>



*Stage 1 and Stage 2 Archeological assessments were conducted for the study area in Fall 2016 and Spring 2017. Desktop studies and pedestrian surveys were conducted to identify and collect any artefacts found in areas of potential disturbance. The results of the Stage 2 Assessment will determine whether further assessment is required.*

## Thank you.

We'd like to take the opportunity to thank everyone involved in helping us prepare the fields for archaeology works. We recognize that this is an inconvenience to our landowners and not part of your normal farming operations and we are genuinely grateful for your co-operation and assistance. A comprehensive archaeology assessment is required by the Ministry of Tourism, Culture and Sport to demonstrate that build-out of the project will have negligible impacts and ensure that we can move forward to construction without delays and further disruption to your agricultural operations.



# IN YOUR COMMUNITY

EDF EN Canada is committed to building long-term and meaningful relationships in our host communities. Social responsibility plays a central role in all aspects of our business – from the projects we develop, build and operate, to the staff we hire and the organizations we support.

Romney Wind Energy Centre is pleased to be part of the Chatham Kent and Lakeshore communities and provide support to projects that matter to you.



## Projects and initiatives supported by Romney Wind Energy Centre to date:

### 2016

Positivity Day	A full day of events that promote positive thinking. In 2016 this initiative reached over 10,000 people directly on the tour through schools and businesses in Chatham-Kent
Grassy 2 Rock 2016	Free event that showcases the local boating communities and features local bands performing live on a barge at Grassy
University of Guelph CAMA Student Chapter	CAMA Student Chapter works to develop a professional marketing plan for new, innovative agricultural products. This marketing plan is then entered into a competition with over 30 other schools from across North America at the National Agri-Marketing Association (NAMA)

### 2017

Food Freedom Day	Kent Federation of Agriculture managed food donations for those in need, through the Salvation Army and Outreach for Hunger in Chatham Kent.
Wheatley Two Creeks Conservation Area	Installation of a Wild Flower Garden in conjunction with local schools and members of Wheatley Horticulture Society
Agricultural Society's Comber Fair	Comber Fair Baby Show: boys and girls contest Comber Agricultural Society Bursary TREC Education : workshops and activities to provide interactive, hands-on experiences in renewable energy for kids and adults during the Comber Fair.

# ENVIRONMENTAL INITIATIVES

## undertaken by Romney Wind Energy Centre

We take environmental stewardship seriously and as such, the project team has been working with local community partners on the following conservation projects:

### 1 Installation of eagle platforms

Romney Wind Energy Centre is working with the Walpole Island First Nation to install a bald eagle platform on Walpole Island. The community and the local school are also involved in the project helping to identify a suitable location and create a new habitat for bald eagles. More locally, we are also in discussions to install a second bald eagle platform in Wheatley Provincial Park and hope to have both projects completed by the end of 2017. The team is exploring the possibility of installing eagle cams, so that anyone interested can go on-line and track the progress of the eagles.

### 2 Installation of bat houses

This project involves working with local residents and conservation groups to establish suitable locations for the installation of bat houses. The objective is to try to create new habitat for bats whose numbers are in decline because of a disease known as White Nose Syndrome. The fungus that causes this disease disrupts their hibernation cycle, meaning they use up precious body fat supplies before spring arrives.

If you have any other projects that you think might be suitable or of local interest, please let us know.



Eagle nest platforms



Bat houses

## CONTACT US

If you have any questions or concerns regarding the Romney Wind Energy Centre, please contact:

**Mark Gallagher, Senior Developer**  
**RomneyWind@edf-en.ca**  
**1-844-55-333-36**

For more information about the Project, please visit the website at:  
**[www.edf-en.ca/project/romney/](http://www.edf-en.ca/project/romney/)**

For more information about EDF EN Canada Inc., please visit our website at:  
**[www.edf-en.ca](http://www.edf-en.ca)**

## ABOUT EDF EN CANADA

EDF EN Canada is a green energy pioneer and market leader, with over 1,600 MW of wind and solar energy in varying stages of development, active construction and operation across Canada. We develop, design, build and operate renewable energy projects that harness the earth's renewable resources – helping to drive the green energy economy and create industries of the future.

EDF EN Canada is a Canadian entity and a wholly-owned subsidiary of EDF EN.



EDF EN Canada Inc.  
53 rue Jarvis, bureau 300  
Toronto, ON M5C 2H2  
1-844-55-EDF-EN / 1-844-553-3336  
**[www.edf-en.ca](http://www.edf-en.ca)**

