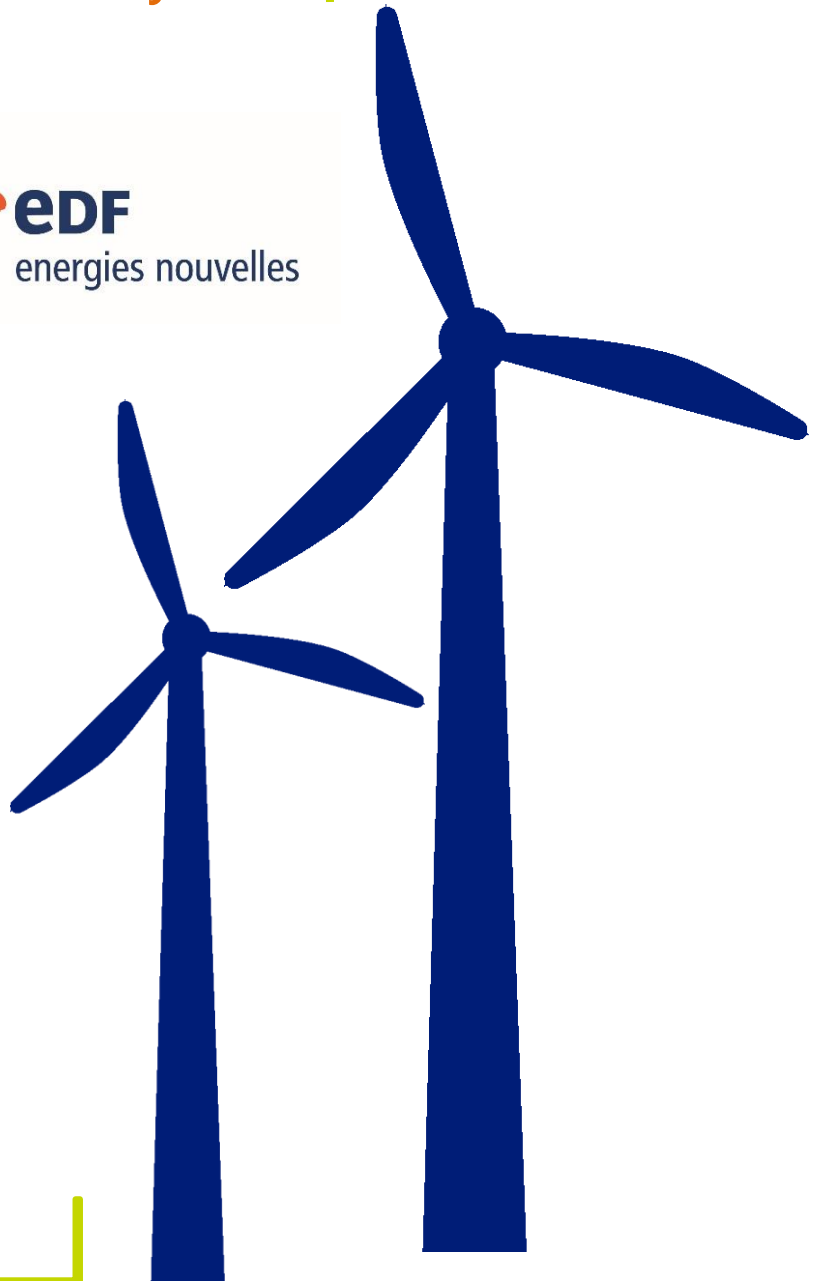




Romney Wind Energy Centre  
**COMMUNITY ENGAGEMENT PLAN**

Update – May 2017

Large Renewable  
Procurement (LRP) I



ROMNEY WIND ENERGY CENTRE

844.553-3336

[RomneyWind@edf-en.ca](mailto:RomneyWind@edf-en.ca)

[www.romneywind.ca](http://www.romneywind.ca)

## Table of Contents

<b>1. Background</b>	<b>2</b>
<b>2. Objectives</b>	<b>3</b>
<b>3. Community Engagement Process</b>	<b>4</b>
<b>4. Stakeholders list</b>	<b>5</b>
i. Land owners and users	5
ii. Aboriginal Stakeholders	5
iii. Municipal & Government Stakeholders	6
iv. Government Agencies	6
v. Special Interest Groups	6
<b>5. Project and Community Engagement Plan phasing</b>	<b>7</b>
i. Phase 1: Pre-Contract	7
ii. Phase 2: Development	8
iii. Phase 3: Construction	10
iv. Phase 4: Operation	10
v. Phase 5: Decommissioning	11
<b>6. Aboriginal Consultation and Engagement</b>	<b>11</b>
<b>7. FAQs</b>	<b>12</b>

## 1. Background

In Spring 2015, EDF EN Canada Development Inc. developed a Community Engagement Plan for the Romney Wind Energy Centre (the "Project"), an On-Shore Wind power Project located in the Municipalities of Chatham-Kent and the Town of Lakeshore.

On September 1<sup>st</sup>, 2015, the Project was submitted to the Independent Electricity System Operator (IESO) under the Large Renewable Procurement's first Request for Proposals (the "LRP I RFP") to obtain a power purchase contract for this Project.

In early 2016, EDF EN Canada Development Inc. was awarded an LRP I Contract (the "Contract") by the IESO to develop, build and operate the 60 MW Romney Wind Energy Centre. Romney Energy Centre Limited Partnership, is a partnership between EDF EN Canada Development Inc. and Aamjiwnaang First Nation, and is the owner of the Project and the Supplier under the Contract.

The Project team is now finalizing the Renewable Energy Approval (REA) reports and studies and intend to submit the application to the Ministry of the Environment and Climate Change (MOECC) by the end of June 2017. The REA process outlines standards for the protection of the environment, cultural heritage and continued engagement with members of the public, local Municipalities and Aboriginal communities. Pending successful permitting, the Romney Wind Energy Centre is anticipated to begin construction in late 2018/early 2019.

Through the development of the Project in 2016 and early 2017, and particularly as a result of environmental field studies, mitigation measures and community feedback, the Project's footprint has naturally evolved. Part of the lands that were initially considered for the Project site area are no longer considered suitable and other lands that were under option within the project boundary have been added to the Site to replace these unsuitable parcels. As per the Contract provisions, changes to the site have to be approved by the IESO through a Contract Facility Amendment (CFA). EDF EN Canada Development Inc. is preparing a CFA for submission in 2017.

This Community Engagement Plan update is part of the CFA requirements, to ensure that the community is aware of how and why the Project evolved from its initial design.

## 2. Objectives

The goals of this Community Engagement Plan are to:

- Share information on the Project;
- Provide an overview of the LRP I RFP process;
- Outline the level of engagement performed this far;
- Document our plans for future engagement.

This Community Engagement Plan provides an overview of our goals and objectives, however to ensure the proposed plan remains relevant and reflective of community interests, we anticipate ongoing collaboration and discussion between EDF EN Canada Development Inc. and all interested stakeholders to amend and adjust the plan.

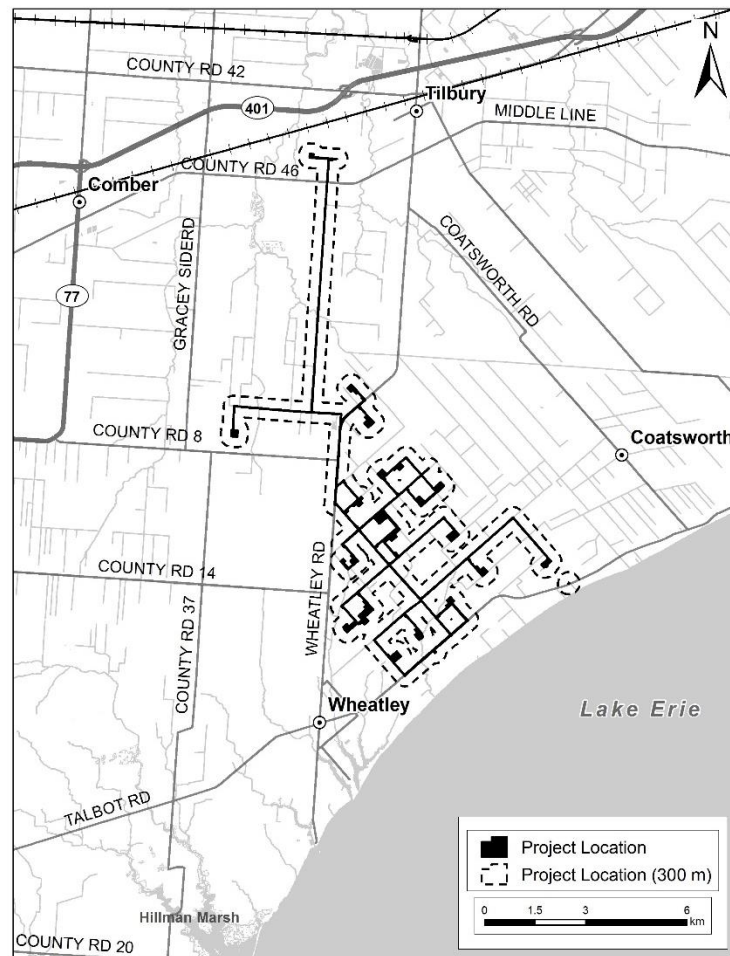


Figure 1: Romney Wind Energy Centre Location map

The above map illustrates the general area of the Project.

The layout presented above was determined after gathering feedback from field studies, the local communities, stakeholders and Aboriginal communities. Environmental and technical studies help us better understand the potential impacts on the community, natural heritage, cultural heritage, archaeology and other key local considerations. While all development has some impact on the environment, our goal is to ensure we addressed local concerns and minimized potential impacts as a result of our proposed Project.

### 3. Community Engagement Process

Our community engagement process is meant to:

- Inform stakeholders and Aboriginal communities of the Project by communicating potential environmental, social, economic, and land use changes;
- Collect, consider and respond to feedback from stakeholders and Aboriginal communities.

EDF EN Canada Development Inc. is engaging in two easily accessible and widely available ways:

- Information; and
- Consultation

#### Information

A major goal of our Community Engagement Plan is to inform the public and stakeholders about the Project and its progress. Information tools include the following:

- Project website;
- Notice of Public Community Meeting;
- Public Community Meetings;
- Advertising in Community and First Nation newspapers;
- Mail to Landowners abutting the Site (550 meters) and the proposed Connection Line (120 meters);
- Newsletter.

## Consultation

In addition to informing the community, we created opportunities for stakeholders (including local community groups, adjacent landowners, other tenure holders and local businesses) and Aboriginal communities to provide feedback, and to integrate it in the Project.

EDF EN Canada Development Inc. has invited stakeholders and Aboriginal communities who have an interest in the Project to provide their input.

Consultation has been supported by the following tools:

- Personal exchanges and one-on-one meetings;
- Public meetings;
- Public meetings with Municipal Councils;
- Project-specific mailing lists; and
- Events as landowner dinner and golf outing.

## 4. Stakeholders list

EDF EN Canada Development Inc. committed to engaging the following stakeholders throughout the Project lifecycle, from early development to decommissioning.

### i. Land owners and users

- Owners or tenants of the Properties constituting the Project Site;
- Assessed owners of property;
  - Within 550 meters of the Properties constituting the Site, and;
  - Within 120 meters from the proposed Connection Line.

### ii. Aboriginal Stakeholders

The Ministry of Environment has reviewed the information provided in the Draft Project Description Report (PDR) of the Project and has anticipated environmental effects (as described in the PDR) relative to its current understanding of the interests of Aboriginal communities in the area. As a consequence, the Ministry provided a list of aboriginal

communities that we considered during the consultation process (see Appendix I – List of Aboriginal Communities).

### **iii. Municipal & Government Stakeholders**

- Mayor and council of each local Municipality in which the Project or proposed Connection Line will be located;
- Clerk of each local Municipality in which the Project or proposed Connection Line will be located;
- If relevant:
  - Secretary-treasurer of each local roads board of a local roads area in which the Large Renewable Project or proposed Connection Line is proposed to be situated;
  - Secretary of each Local Services Board of a board area in which the Large Renewable Project or proposed Connection Line is proposed to be situated;
  - Secretary-treasurer of any Planning Board that has jurisdiction in an area in which the Large Renewable Project or proposed Connection Line is proposed to be situated.

### **iv. Government Agencies**

- The Secretary/Treasurer of the Local Conservation Authority;
- The Director, Environmental Approvals Access and Service Integration Branch, Ministry of the Environment and Climate Change;
- Ministry of Tourism, Culture and Sport (MTCS);
- Transport Canada;
- NavCanada;
- The Director, Engineering and Development Branch, Environment Canada;
- Fisheries and Ocean Canada.

### **v. Special Interest Groups**

- Non-Governmental Organizations (NGOs);
- Industry Associations;
- Local Businesses and Business Industry Associations (BIAs);
- If relevant, secretaries of every company operating an oil or natural gas pipeline, if a pipeline right of way is located with 200 meters of the Project or proposed Connection Line;

- Local groups of interested as Water First, Growing Up in Wheatley, schools, etc.

The list of identified stakeholders and Aboriginal Communities identified as of today for the Romney Wind Energy Centre can be found as Appendix I and II.

## 5. Project and Community Engagement Plan phasing

### i. Phase 1: Pre-Contract

The Pre-Contract phase ended when the Project was awarded the Contract (March 2016). The following engagement tasks, as a minimum, were part of the Community Engagement Plan for the Pre-Contract phase. The vast majority of these items occurred before the submission date, September 1, 2015.

- The Municipalities where the Project and/or proposed Connection Line are located were informed and their staff engaged. Delegations at one or more Municipal Council meetings were organized;
- A user-friendly Project web page (<http://www.edf-en.ca/Project/romney/>) was created to allow opportunities for interested stakeholders and Aboriginal communities to understand the proposed Project. The webpage is updated regularly and presents a wide range of information, including the newsletters and the documents presented during the public meetings;
- A copy of the Community Engagement Plan was shared with each interested Municipal Clerk and posted on the Project website;
- One (1) Public Community Meeting was hosted in 2015 in each of Lakeshore and Chatham Kent. The meeting(s) included information and displays showing the location of the proposed Project and the proposed Connection Line within relevant Municipalities. Information pertaining to wind energy generation, the Community Engagement Plan and updates on the status and progress of development activities, such as the environmental assessment and anticipated construction schedule were available;

The Public Community Meeting for the Town of Lakeshore took place on August 4th at the Millen Community Centre (1925 South Middle Rd., Lakeshore, ON).

The Public Community Meeting for the Municipality of Chatham-Kent took place on August 4th at the Tilbury Memorial Arena (55 Bond Ave, Tilbury ON N0P 2L0).

The documents presented during the public meeting were posted on the Project website for the members of the community who were not able to attend.

A notice in advance of the Public Community Meeting was published in two (2) separate publications of a local newspaper;

A direct mail was sent to the public notice of the Public Community Meeting to residents and assessed owners of Properties located within 550 meters of the Project Site and 120 meters of the proposed Connection Line; and all other applicable stakeholders as required by the LRP I RFP.

## **ii. Phase 2: Development**

During the Development phase, engagement has been and will be focused on continuing to inform stakeholders and Aboriginal communities of the Project progress, monitoring and managing stakeholder and Aboriginal community inputs and perspectives, as well as ensuring the Project meets all permitting obligations as set out by the Ministry of the Environment and Climate Change (MOECC) in the Renewable Energy Approval (REA) process.

The stages and requirements of the REA are located on the Ministry's website: <http://www.ontario.ca/environment-and-energy/renewable-energy-approvals>.

Phase 2 began when the Contract was awarded to EDF EN Canada Development Inc. in March 2016 and will end at the start of construction (expected for Spring 2019).

Phase 2 performs the following engagement tasks:

- One first round of additional public meetings was held prior to submission of the REA to communicate how the development team incorporated stakeholder feedback in Project preliminary design. In addition, the public meetings advised interested stakeholders on the results of technical studies.

The first round of public meetings required by the REA process were held in the Municipality of Chatham-Kent on September 26, 2016 (Tilbury Memorial Arena) and in the Town of Lakeshore on September 27, 2016 (Millen Community Centre).

- The second round of public meetings required by the REA process will be held in the Municipality of Chatham-Kent on June 7, 2017 (Tilbury Memorial Arena) and in the Town of Lakeshore on June 8, 2017 (Millen Community Centre);

In this second round, the public will be informed of the recent developments of the Project, the final design as will be submitted in the REA, and the changes applicable to the Contract as per the CFA process.

The documents presented during the first round of public meetings were posted on the Project website for the members of the community who were not able to attend. The same process will apply to the second round of public meetings.

- A list of interested stakeholders and Aboriginal communities was identified and EDF EN Canada Development Inc. proactively consulted, and still consults, the parties on an on-going basis.
- Approximately 250 activities (including exchanges done by e-mail, mail, one-on-one meetings, public meetings), were held and recorded in the stakeholder management software IRIS. During these exchanges we have provided opportunities for interested stakeholders and Aboriginal communities to be involved, including in the planning and development of Project design considerations. Also, these exchanges have created opportunities to the collection and sharing of information related to the potential environmental, economic, social, heritage and health effects of the proposed Project. Using efficiency tools as the stakeholder management software, the Project team collected and responded to public input and comments. The platform also facilitates the registration of issues or concerns that may be related to the potential impact of the Project on social, environmental, economic, health and heritage aspects. These topics were identified as “valued components” and considered in Project design and addressed in the Consultation Report of the REA;
- Meetings with Municipal Officials to keep them apprised of the Project’s progress are held on an ongoing basis.
- Meetings with Aboriginal communities to keep them apprised of Project progress and gathering their feedback are held on an ongoing basis;
- The Project website (<http://www.edf-en.ca/Project/romney/>) is regularly updated as needed with any new and relevant information;
- A newsletter, posted on the website and distributed by mail, was created in order to inform the landowners, municipalities, Aboriginal communities and various interested stakeholders about the development of the Project;

- A landowner dinner was organised in Wheatley on August 23, 2016 creating an opportunity to present the Project team to the landowners, share information and answer questions;

### **iii. Phase 3: Construction**

During the Construction phase, if applicable, most of the activities executed during the previous phases will remain in place. Furthermore, since the Construction phase may cause some disturbance to local residents, additional initiatives will be implemented as described below. Once Construction, anticipated to last up to the end of 2019, is underway, Phase 4 of the engagement plan will take effect.

- Work to establish a Community Liaison Committee (CLC) by convening a special task force to assemble the committee members;
- Hire a manager on site to supervise Construction and also to respond and address concerns from the communities;
- Develop an Emergency Response and Public Safety Plan with local public safety authorities;
- Work with Municipal Officials to negotiate road-use agreements and other Project logistics.

### **iv. Phase 4: Operation**

The objectives and goals of this phase will be focused on executing all previously negotiated agreements between EDF EN Canada Development Inc. and Romney Energy Center Limited Partnership, the Province of Ontario, the interested Municipalities, the Project's host landowners and other applicable persons and entities, as well as ensuring the Facility operates efficiently and safely.

The Romney Wind Energy Centre Facility (the "Facility") Operation Phase is anticipated to last at least 20 years from the time the Project achieves Commercial Operation (i.e. is fully operational), until the Facility decommissions.

During Phase 4, EDF EN Canada Development Inc. will perform the following engagement tasks:

- Manage the safe operation of the Facility;
- Support community activities and enterprises;

- Effectively develop, communicate and run a public safety protocol;
- Execute all landowners agreements;
- Execute all Municipal agreements; and
- Execute all Aboriginal agreements.

When the Facility is no longer efficient to operate, it may be possible to replace aging equipment with new equipment. This type of replacement is called “repowering” a site. Prior to making a decision to repower a facility with new turbines, EDF EN Canada Development Inc. would first engage with local and provincial governments, stakeholders and local Aboriginal communities.

## **v. Phase 5: Decommissioning**

At this stage of the Facility’s lifecycle, EDF EN Canada Development Inc., based on our experience in multiple jurisdictions across North America and our best practices, will implement a Decommissioning Plan compliant with all prescribed municipal and provincial regulations and requirements. Property landowners, tenants, neighbors and the host Municipalities will again be consulted to ensure the community is aware of the proposed Decommissioning Plan.

## **6. Aboriginal Consultation and Engagement**

We embrace our duty and obligation to engage with local Aboriginal communities. Working with the Ontario government, we obtained a listing of communities who exercise their constitutionally protected Aboriginal or Treaty Rights on the lands we develop the Project on (see Appendix I – List of Aboriginal Communities).

We encourage any Aboriginal Communities not currently listed below, who wishes to make their interests known, to please contact us directly through the Contact Information provided on our website and in the present document.

A Notice of First and Second Public Community Meetings, through the REA process, were distributed to the identified Aboriginal Communities at least sixty (60) days in advance to the Public Meetings held during Phase 2 – Development Phase. Furthermore the draft of all the reports were sent and made available to the identified list. An additional LRP I Notice of Public Meeting, identifying the CFA process, was sent early May, for the same public meeting dates as the REA meetings.

Meetings with identified Aboriginal communities to keep them apprised of Project progress and gathering their feedback are being held on an ongoing basis. Members of the Aboriginal communities, as Caldwell, Aamjiwnaang, Chippewas of the Thames, and Walpole Island were invited to participate in archaeology studies.

Project team has collaborating with EDF Renewable Services, an affiliated company of EDF EN Canada Development Inc. specialized in Operations & Maintenance, in order to offer internships opportunities to the First Nation communities.

Since Romney Wind Energy Centre represents a strategic partnership between EDF EN Canada Inc. and the Aamjiwnaang First Nation, an open house is anticipated to take place in July 2017 in the Aamjiwnaang reserve.

## 7. FAQs

EDF EN Canada Development Inc. is committed to receive, register in the stakeholder management software (IRIS), and respond to each comment or question from stakeholders groups. The answers are generally provided directly to the applicant (by mail, e-mail, or phone when required). Additionally, if the concern is considered as public interest (as water wells, birds, road agreements, noise, and other issues), we explore the subject further using different means of communications as the Public Meetings and the newsletters.

These comments enhance our understanding of potential environmental, social, economic, health, or heritage impacts and inform Project development, design, construction, or operation.

## *Appendix I: List of Aboriginal Communities*

The following is a list of Aboriginal Communities provided by Ministry of the Environment:

Common name	Aboriginal communities
Chief Dan Miskokomon	Bkejwanong Territory Walpole Island First Nation
Chief Johanne Rogers	Aamjiwnaang First Nation
Chief Randall Phillips	Oneida Nation of the Thames
Chief Leslie Whiteye	Chippewas Of the Thames First Nation
Chief Louise Hilier	Caldwell First Nation
Chief Thomas Bressette	Chippewas of Kettle and Stony Point
Chief Greg Peters	Moravian Of the Thames
Chief Roger Thomas	Munsee-Delaware Nation

## *Appendix II: List of Project stakeholders*

The following is the list of identified stakeholders that may be affected by or otherwise interested in the Project, to the exception of First Nations, listed as Appendix I, and of private individuals, not listed here for security and regulatory purposes:

Name	Title
Municipality of Chatham-Kent	Mayor, Municipal Council and Clerk Director of Financial Services, Secretary Treasurer of Planning Board
Town of Lakeshore	Mayor, Municipal Council and Clerk Planning Coordinator, Secretary Treasurer of Planning Board
County of Essex	Clerk, Director of Engineering Services, Secretary Treasurer of Planning Board
Essex Region Conservation Authority	General Manager/ Secretary Treasurer
Lower Thames Valley Conservation Authority	General Manager/ Secretary Treasurer
Ministry of Environment and Climate Change	Director of Environmental Approvals Access and Service Integration Branch, Sarnia District Manager
Environment Canada	Engineering and Development Branch
Nav Canada	Land Use Office
Canadian Broadcast Corporation	Director CBC Transmission
Transport Canada	Ontario Regional Office
Dundee Oil & Gas Limited	President & CEO
Farmer's Oil & Gas Inc.	Founders
Talisman Energy Inc.	Secretary
Trans Canada Pipeline Limited	Executive Vice-President and President, Natural Gas Pipelines
Union Gas Limited	Vice President, Distribution Operations