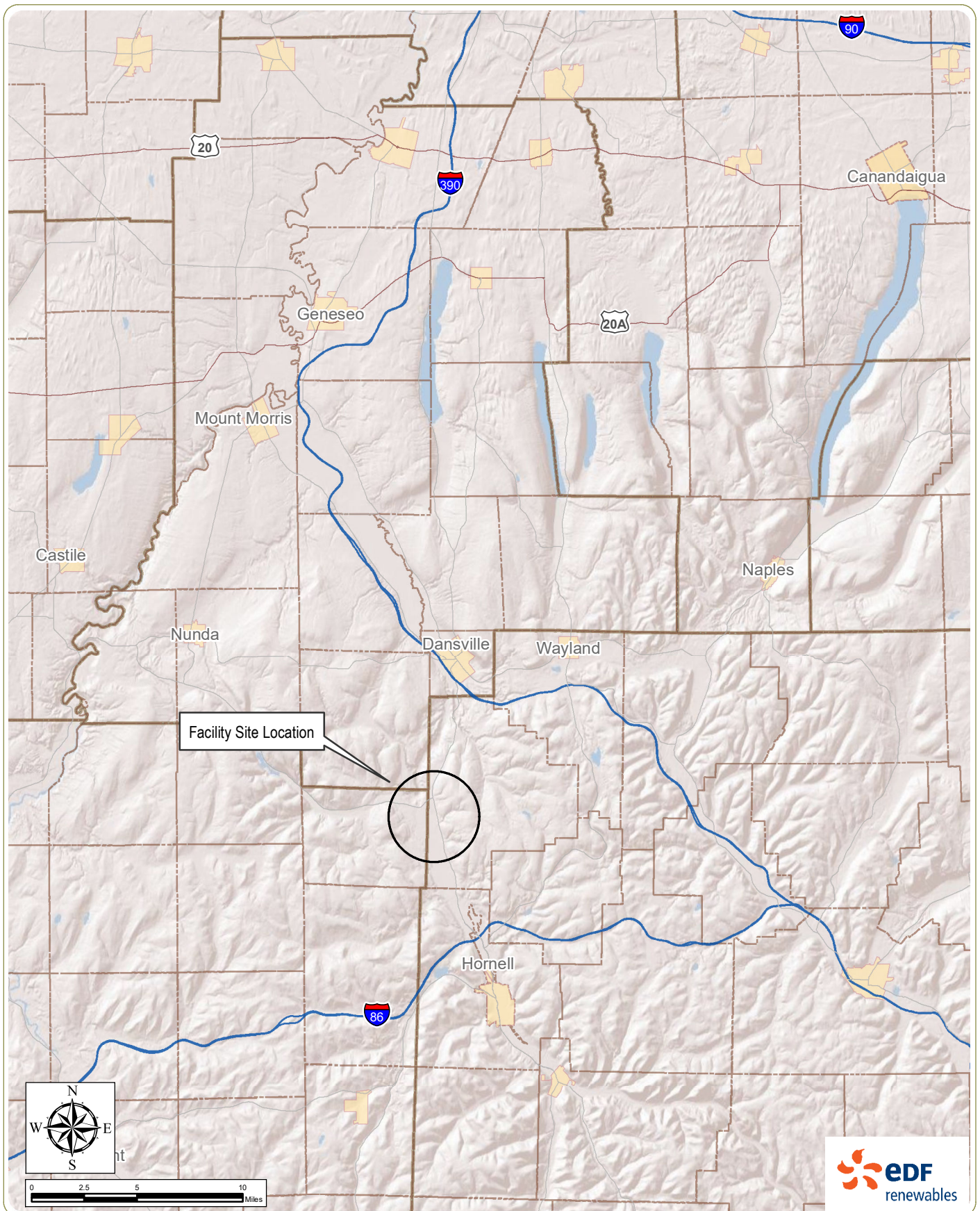


## FIGURES



## Moraine Solar Energy Center

Towns of Burns and Dansville, Allegany and Steuben Counties

Preliminary Scoping Statement - Case No. 18-F-0498

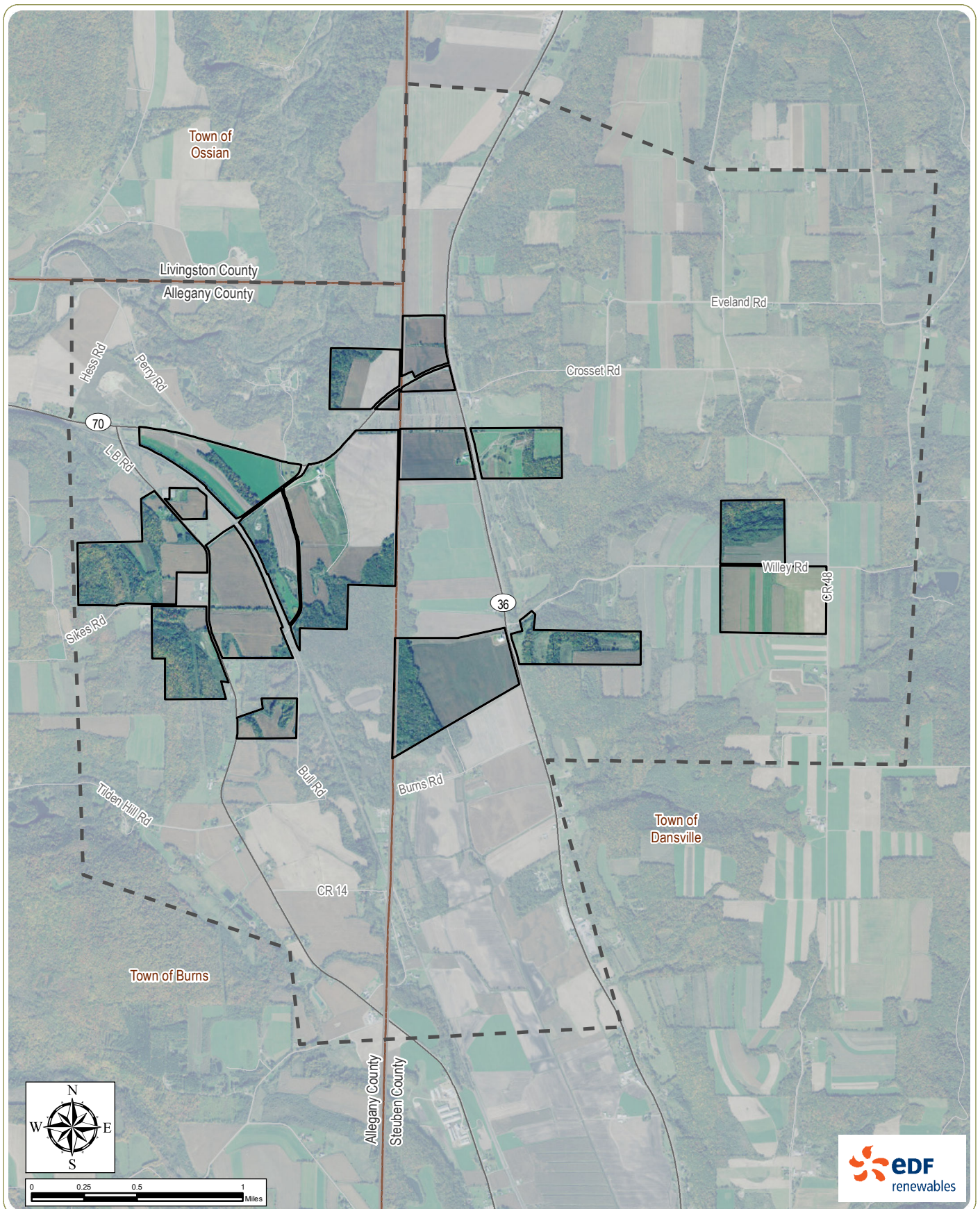
**Figure 1: Regional Facility Location**

**Notes:** 1. Basemap: ESRI StreetMap North America, 2008. 2. This map was generated in ArcMap on January 23, 2020. 3. This is a color graphic. Reproduction in grayscale may misrepresent the data.



www.edrdpc.com









## Moraine Solar Energy Center

Towns of Burns and Dansville, Allegany and Steuben Counties

Preliminary Scoping Statement - Case No. 18-F-0498

**Figure 2: Facility Site**

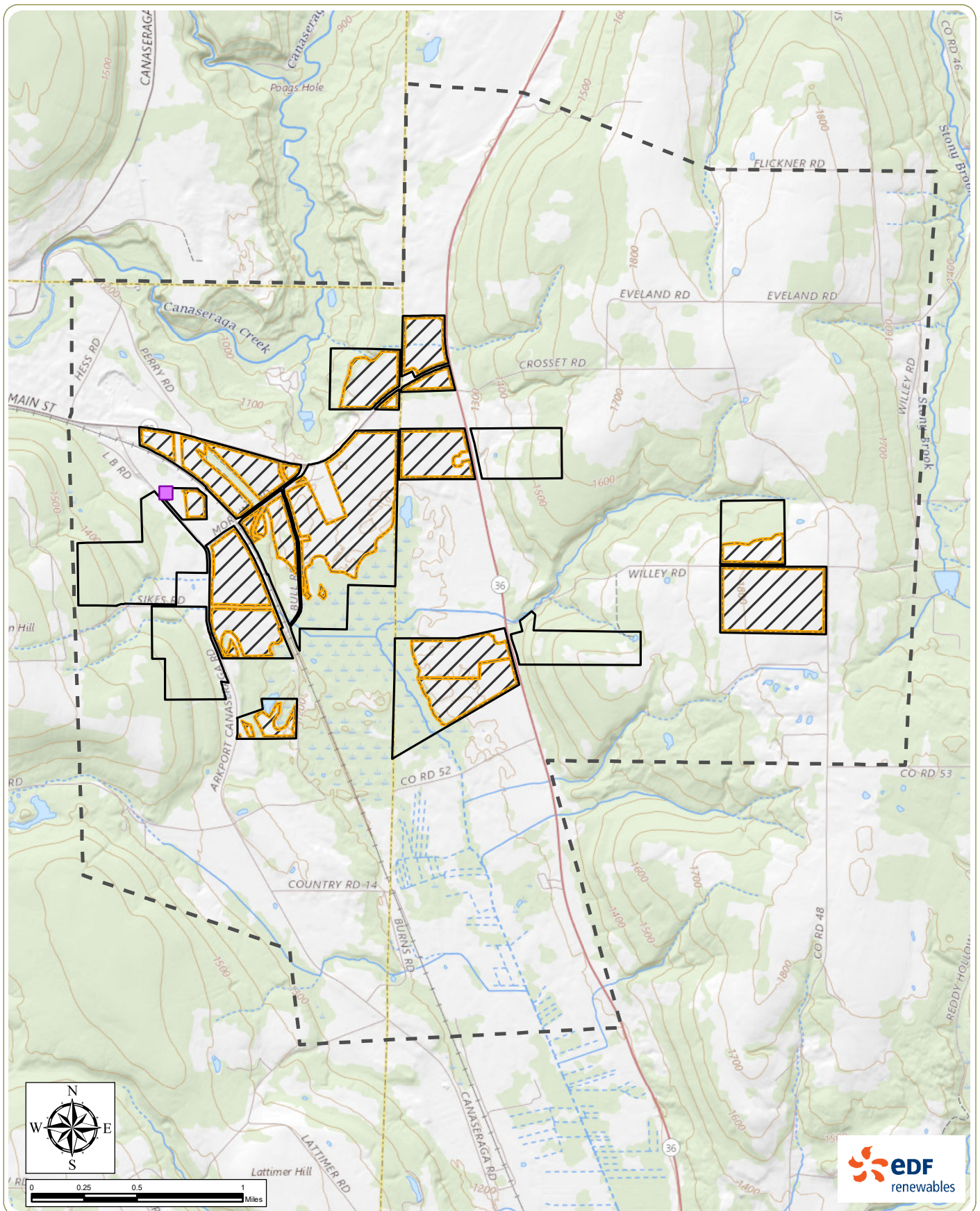
**Notes:** 1. Basemap: USDA NAIP "2019 60 cm" orthoimagery map service. 2. This map was generated in ArcMap on January 23, 2020. 3. This is a color graphic. Reproduction in grayscale may misrepresent the data.

-  Facility Site
-  Facility Area
-  Town Boundary
-  County Boundary



www.edrdpc.com





## Moraine Solar Energy Center

Towns of Burns and Dansville, Allegany and Steuben Counties

Preliminary Scoping Statement - Case No. 18-F-0498

### Figure 3: Preliminary Facility Layout

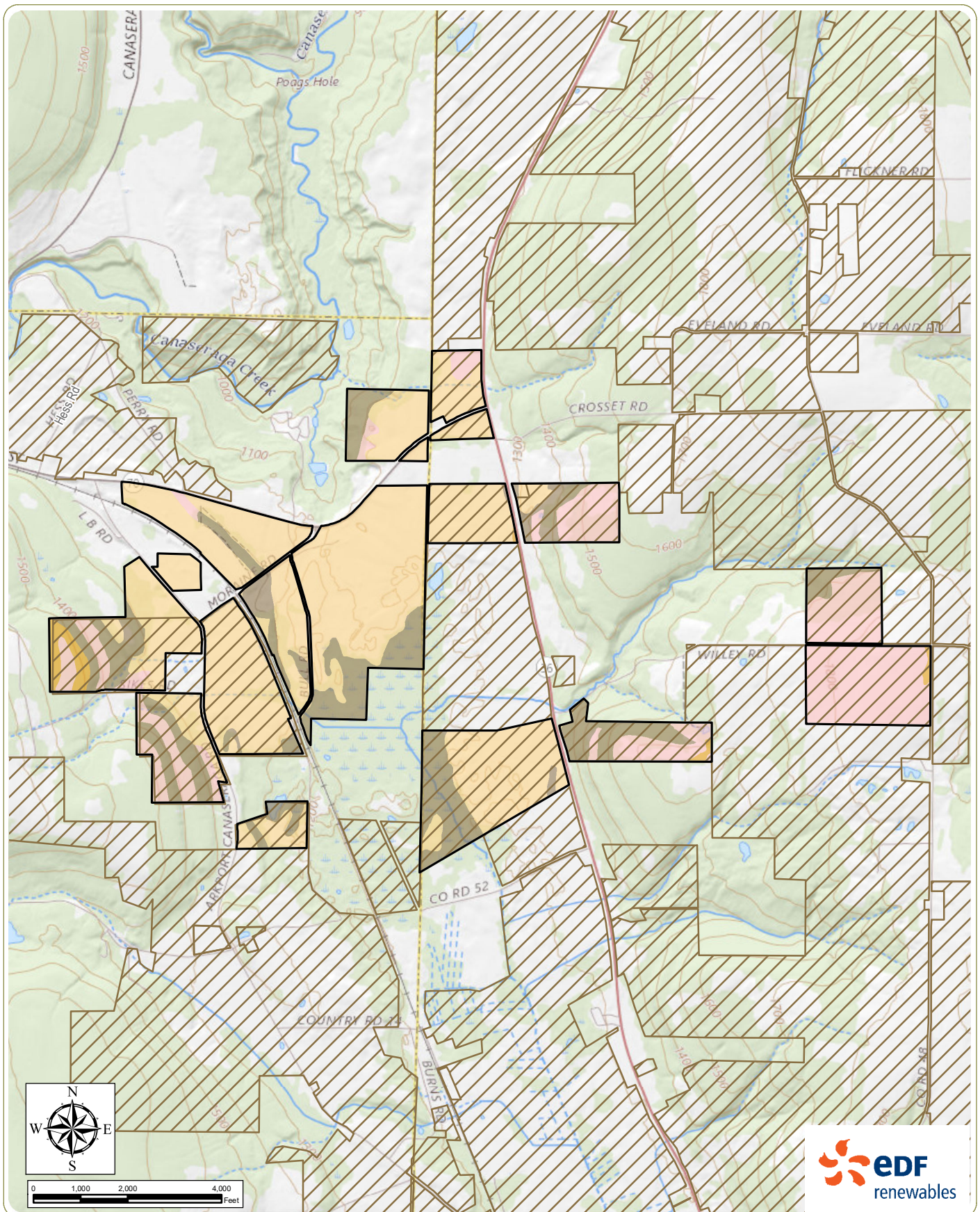
**Notes:** 1. Basemap: ESRI ArcGIS Online "USA Topo Maps" map service. 2. This map was generated in ArcMap on January 23, 2020. 3. This is a color graphic. Reproduction in grayscale may misrepresent the data.

- POI - NYSEG Moraine Substation
- Preliminary Facility Layout
- Facility Site
- Facility Area



www.edrdpc.com





## Moraine Solar Energy Center

Towns of Burns and Dansville, Allegany and Steuben Counties

Preliminary Scoping Statement - Case No. 18-F-0498

### Figure 4: Agricultural Districts and Farmland Soils Classification

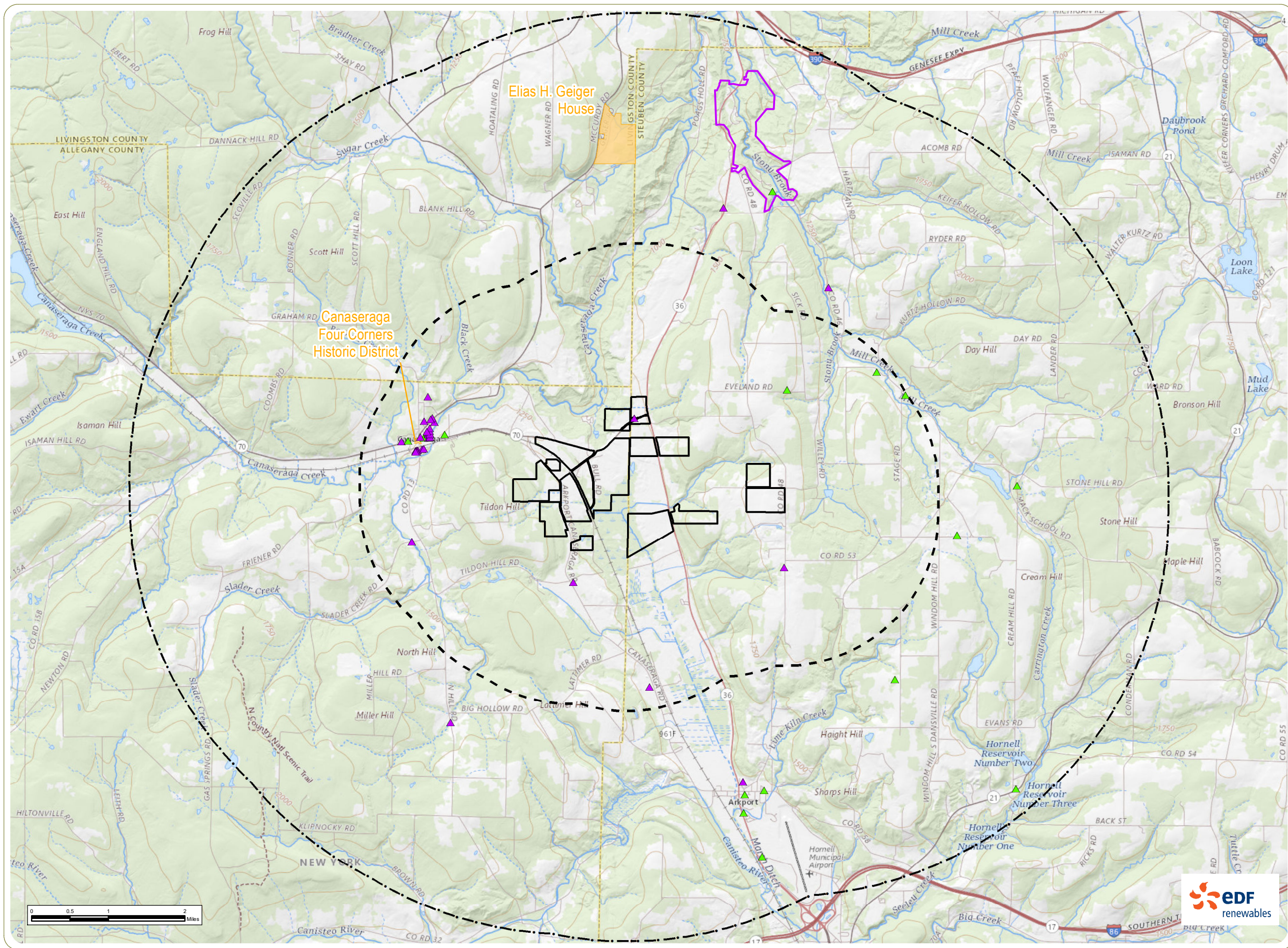
**Notes:** 1. Basemap: ESRI ArcGIS Online "USA Topo Maps" map service. 2. This map was generated in ArcMap on January 23, 2020. 3. This is a color graphic. Reproduction in grayscale may misrepresent the data.

- Prime Farmland
- Prime Farmland if Drained
- Farmland of Statewide Importance
- Not Prime Farmland
- Agricultural District
- Facility Site



www.edrpsc.com





# Moraine Solar Energy Center

Towns of Burns and Dansville, Allegany and Steuben Counties

Preliminary Scoping Statement  
Case No. 18-F-0498

Figure 5: Historic Sites and Districts

- NRHP-Eligible Resource (NYSOPRHP Determined)
- NRHP Eligibility Undetermined
- NRHP Eligibility Undetermined Building District
- NRHP-Listed Site
- 2-mile Study Area
- 5-mile Study Area
- Facility Site

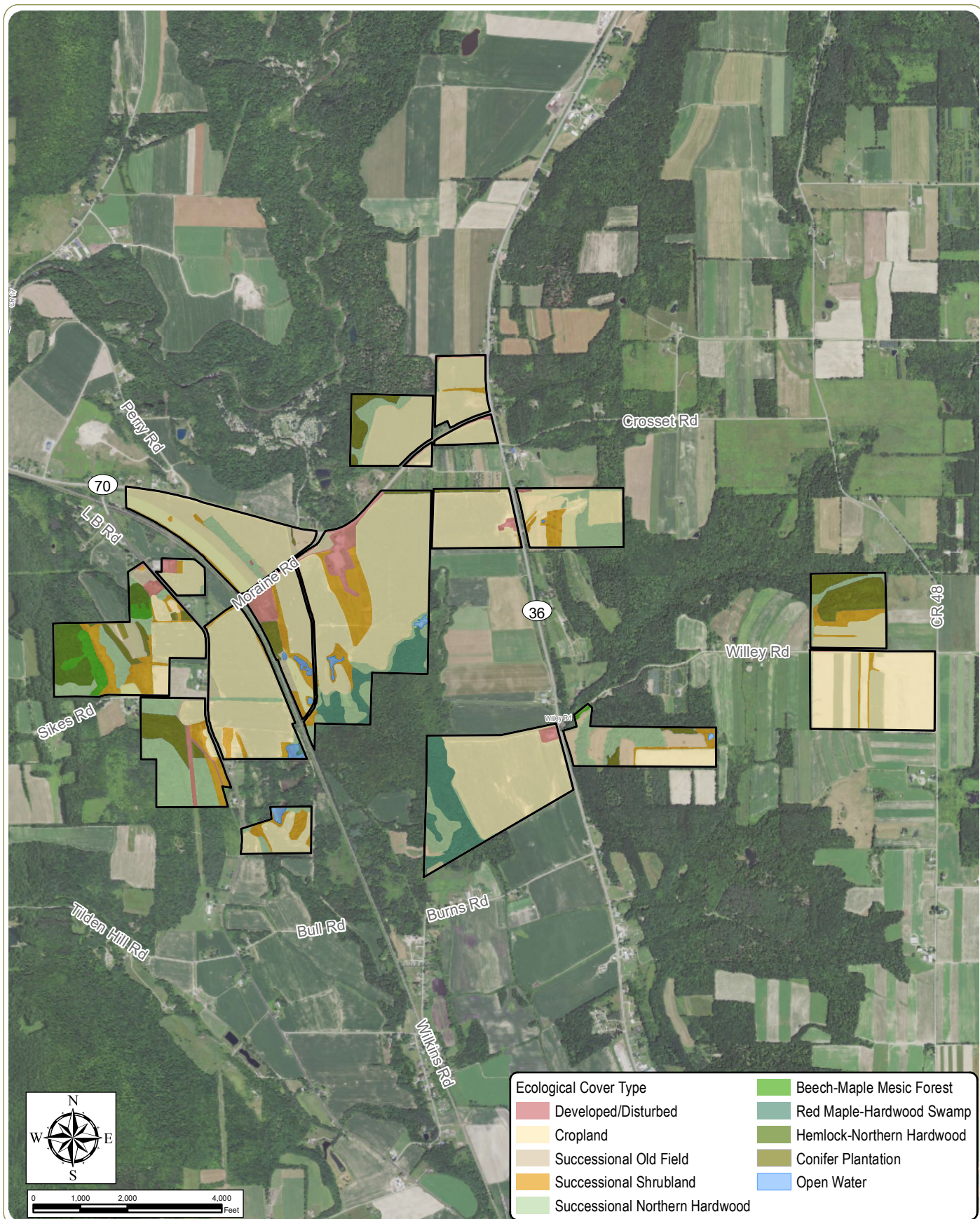
Notes: 1. Basemap: ESRI ArcGIS Online "USA Topo Maps" map service. 2. This map was generated in ArcMap on January 23, 2020. 3. This is a color graphic. Reproduction in grayscale may misrepresent the data.



www.edrdpc.com








## Moraine Solar Energy Center

Towns of Burns and Dansville, Allegany and Steuben Counties

Preliminary Scoping Statement - Case No. 18-F-0498

### Figure 6: Ecological Communities

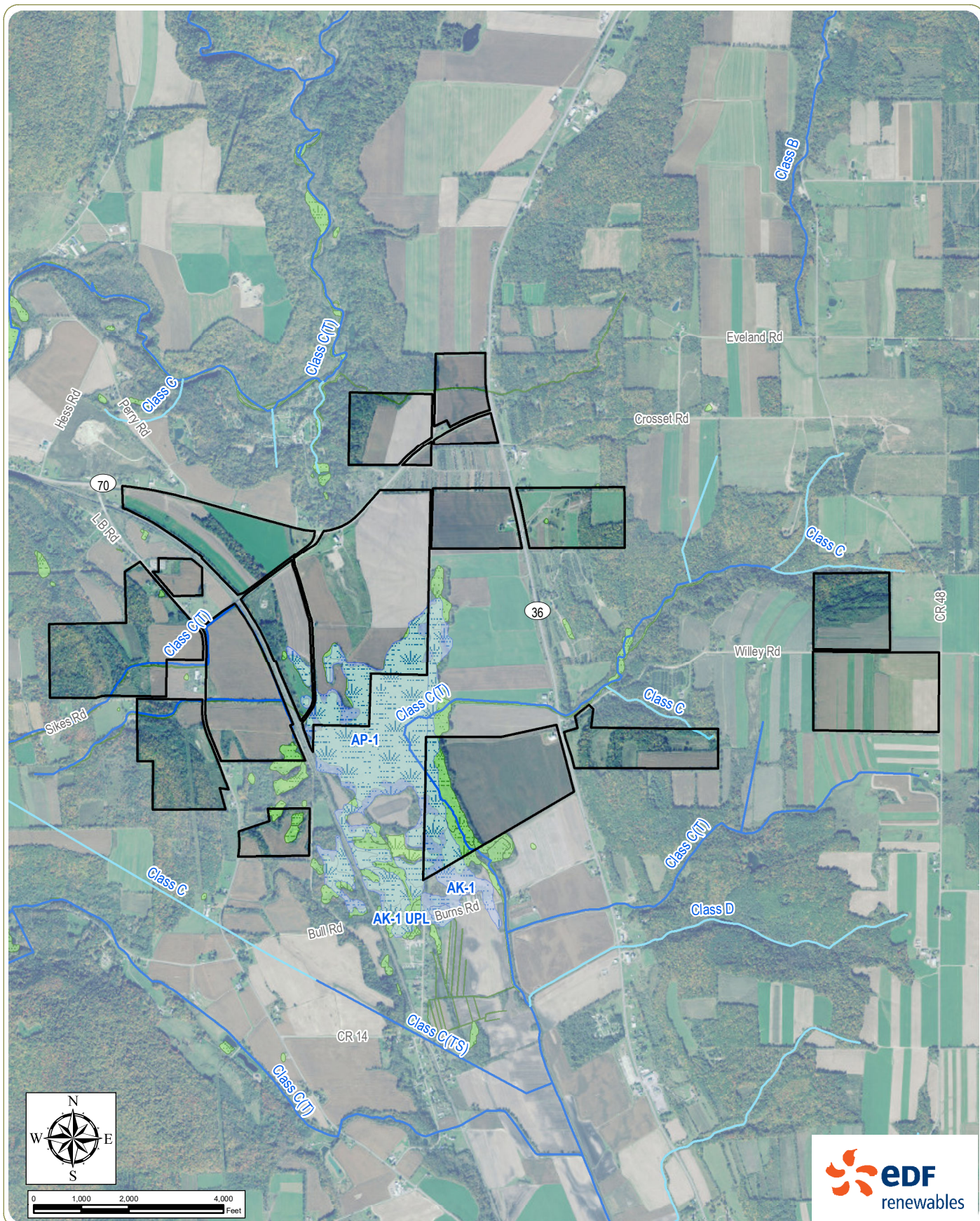
**Notes:** 1. Basemap: USDA NAIP "2019 New York 60 cm" orthoimagery map service. 2. This map was generated in ArcMap on January 23, 2020. 3. This is a color graphic. Reproduction in grayscale may misrepresent the data.

 Facility Site



www.edrdpc.com





## Moraine Solar Energy Center

Towns of Burns and Dansville, Allegany and Steuben Counties  
Preliminary Scoping Statement - Case No. 18-F-0498

### Figure 7: Mapped Wetlands and Streams

**Notes:** 1. Basemap: USDA NAIP "2019 60 cm" orthoimagery map service. 2. This map was generated in ArcMap on January 23, 2020. 3. This is a color graphic. Reproduction in grayscale may misrepresent the data.

#### NYSDEC Stream Classification

- NYS Protected Stream
- Unprotected Stream



NYSDEC Mapped Wetland



NWI Mapped Wetland



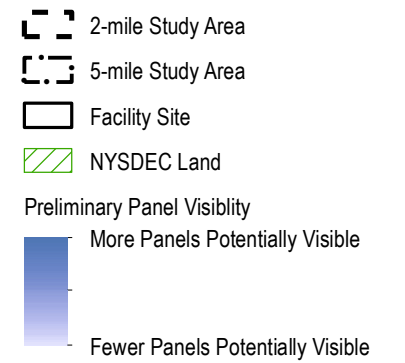
Facility Site



www.edrpsc.com



### Figure 8: Preliminary Viewshed Analysis

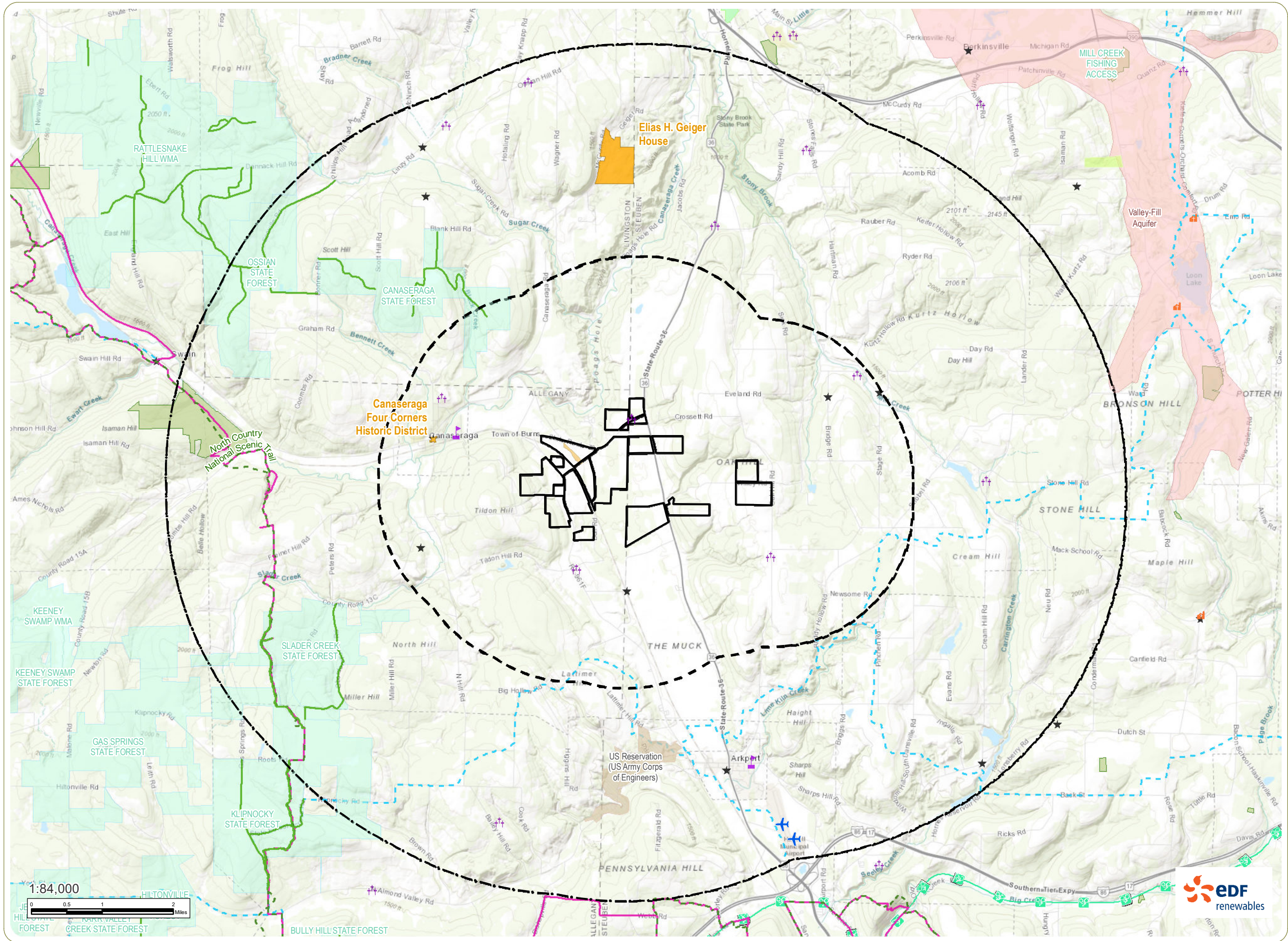


**Notes:** 1. Basemap: ESRI ArcGIS Online "USA Topo Maps" map service. 2. This map was generated in ArcMap on January 23, 2020. 3. This is a color graphic. Reproduction in grayscale may misrepresent the data.

Potential PV panel viewshed visibility is based on the screening effects of topography, vegetation, and manmade structures as represented in the New York State GIS Program Office LIDAR data for Allegany and Steuben County (2016). Sample points representing solar panels were placed throughout the Potential PV Panel Layout areas in a grid pattern with a spacing of 200 feet and assigned a height of 12 feet above grade as a basis for this analysis.







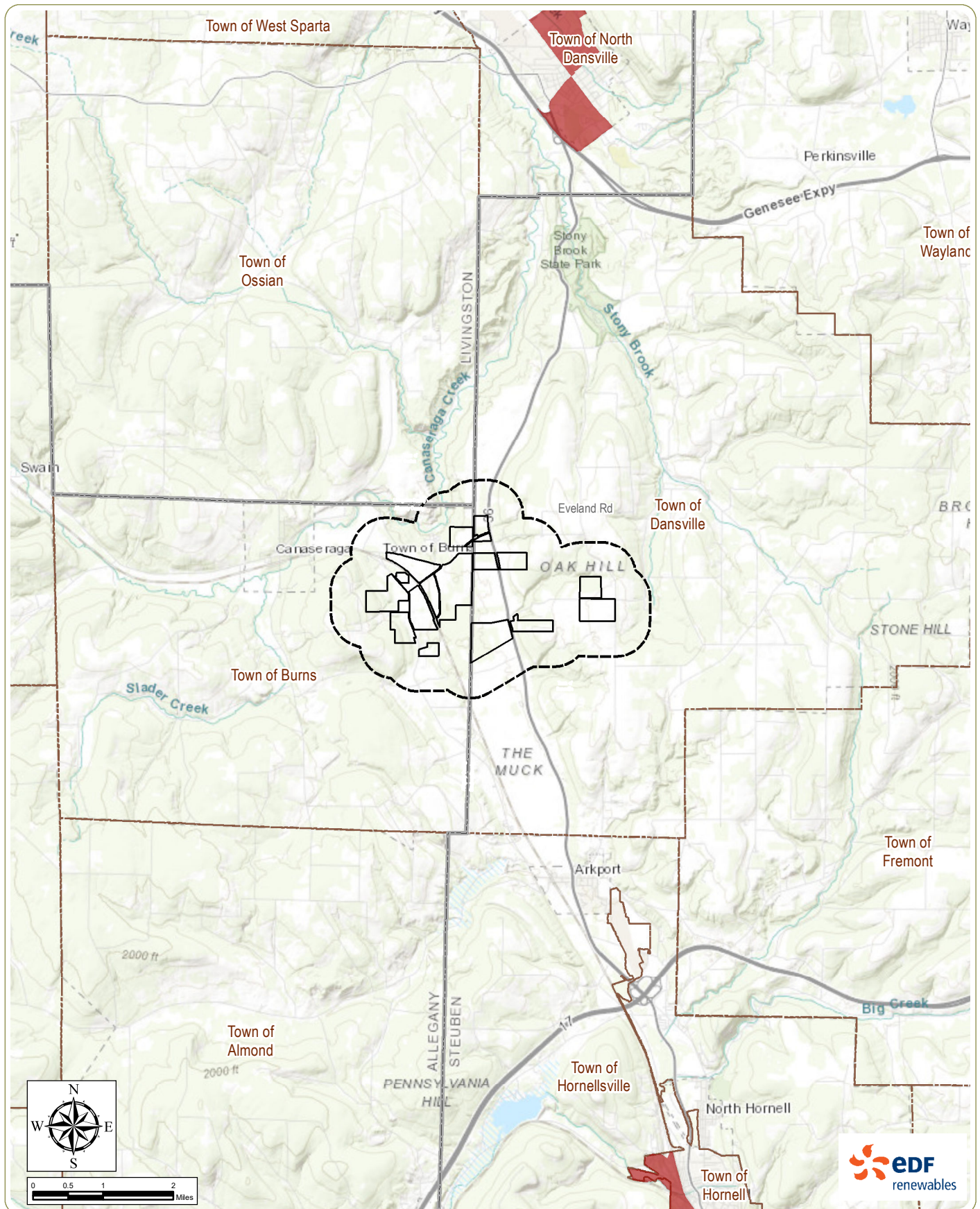
**Moraine Solar**  
Town Burns, Allegany County  
and Town of Dansville,  
Steuben County, New York  
Preliminary Scoping Statement -  
Case No. 18-F-0498

**Figure 9: Visually  
Sensitive Resources and  
Visual Study Area**

- ★ Hamlet
- ✚ Public School
- ✚ Airport Points
- ✚ Church
- ✚ Cemetery
- ✚ Bike Route
- ✚ Trail
- ✚ NPS Long Distance Trails
- ✚ Local Park
- ✚ NYSDEC Land
- ✚ NRHP-Listed Resource
- ✚ Federal Non Recreation
- ✚ The Nature Conservancy Lands
- ✚ Critical Environmental Areas
- ✚ Golf Course
- ✚ Conservation Easement
- ✚ Facility Site
- ✚ 2 Mile Study Area
- ✚ 5 Mile Study Area
- ✚ Town Boundary
- ✚ County Boundary

**Notes:** 1. Basemap: ESRI ArcGIS Online "World Topographic Map" map service. 2. This map was generated in ArcMap on January 23, 2020. 3. This is a color graphic. Reproduction in grayscale may misrepresent the data.





# Moraine Solar Energy Center

Towns of Burns and Dansville, Allegany and Steuben Counties  
Preliminary Scoping Statement - Case No. 18-F-0498

**Figure 10: Potential Environmental Justice Areas**

**Notes:** 1. Basemap: ESRI ArcGIS Online "World Topographic Map" map service. 2. This map was generated in ArcMap on February 11, 2020. 3. This is a color graphic. Reproduction in grayscale may misrepresent the data.

- Potential Environmental Justice Area
- Impact Study Area
- Facility Site

