



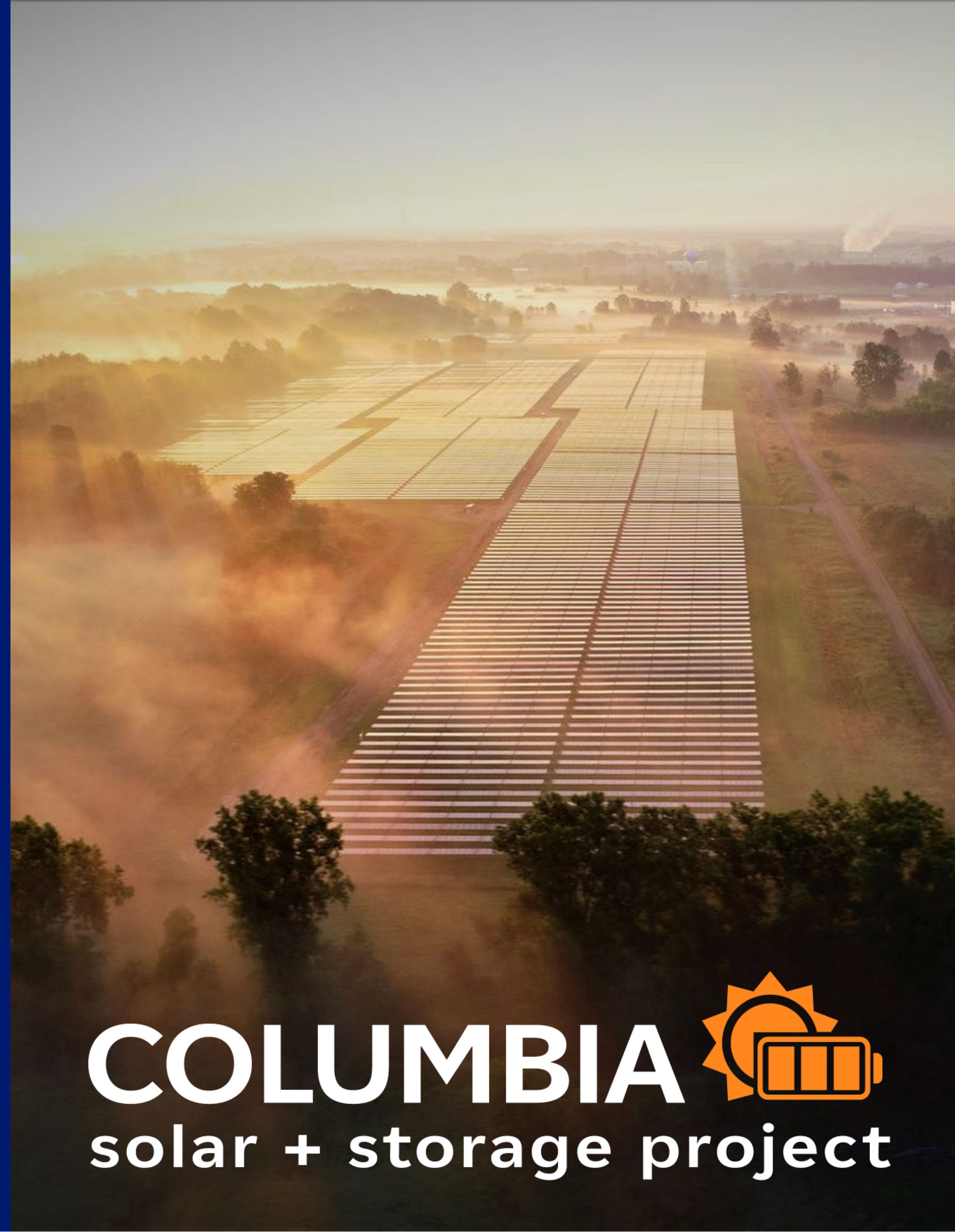
THANK YOU

for attending the
June 16th, 2022

Columbia Solar Energy
Center
Public Meeting

We enjoyed meeting you!

www.columbiasolarproject.com



COLUMBIA 
solar + storage project

Welcome To The Meeting

Meet the Columbia Solar Team

We're here to speak with you! Everyone with a nametag is part of the project team so feel free to ask questions and get introduced.

Josh Bennett – Developer and Main Point of Contact for the project

Haylee Ferington – Community Relations Manager

Jack Honor – Director of Development

Young Sommer LLP – Attorneys for Permitting & Environmental

EDR – environmental professionals leading the permitting process

JS Land - Land acquisition specialists

LaBella – Civil & Electrical Engineers

JS Land Services – Land Agents

PC Public Affairs – PR and Communications

- Due to Covid-19, opportunities for in person public engagement were limited in 2020-2021
- We want to hear from the public regarding issues of importance to guide the project into its next phases
- The project is still in development, and we recognize the desire to see design drawings. Design is heavily impacted by ongoing environmental studies that are wrapping up in Spring/Summer of 2022. We plan to share more in-depth drawings with the community at a second open house in the Fall
- Subject matter experts are in the room to address community questions and concerns
- EDF Renewables is looking for new ways to engage the local community and support the local economy
- Comment cards are available throughout the room for additional feedback



Our Commitment to **Ethical** **Development**

These principles reflect our promise to our host communities, landowners, and other stakeholders.

EDF Renewables is committed to:

- Honesty and transparency in all our development activities
- Engaging with all stakeholders and remaining open to taking input that will improve projects and mitigate impacts
- Being present and available in the community to ensure all voices are heard
- Treating landowners, host communities, and stakeholders fairly and equitably

Leading the Way in Renewable Energy

35+ years

We were on the forefront of the burgeoning wind industry in California as a service provider beginning in 1985.

\$19+ billion

Since 2010, we have paid over \$18 billion to vendors, including lease payments made to landowners.

9,600

Our 24 GW project development has created 9,600 on-site jobs.

Based on an employment factor of 4 jobs per MW IRENA Annual Review

24 GW

We expanded into project development in 2000 and have developed 24 GW of grid-scale solar and wind projects across North America.

as of 12/31/21

GRID-SCALE POWER

Bigger projects. Bigger impact.

EDF Renewables' Grid-Scale Power team provides origination, development, transaction and construction services for large-scale wind (offshore and onshore), solar power generation and storage projects across North America.

Our team of leaders can solve energy challenges facing businesses and communities no matter the size or complexity.

24 GW
Developed

13 GW
O&M Contract

34 GW
Pipeline

35+
Years Experience

1,500+
Employees

Creating Value from Origination to Commercial Operation

*EDF Renewables is a **technology agnostic provider** of renewable generation, storage, and management solutions.*



Origination

Comprehensive **analysis, identification and evaluation** of prospective sites and matching those sites with customer needs.



Development

Resource **assessment, permitting, site design, interconnection rights** and technology selections.



Transaction

Securitization of **energy offtake and financing.**



Construction

Implementation of all aspects of the **system, design, installation, and construction** to ensure a quality build.



Asset Optimization

Asset management, monitoring and maintenance to **ensure profitable and optimal performance** of facility.

EDF Renewables Partners with Utilities, Cooperatives, and Municipalities

Some of our trusted and respected customers shown here:



Statewide Development Pipeline

Rosalen
Towns of Rose and Galen
350 MW
2025 COD

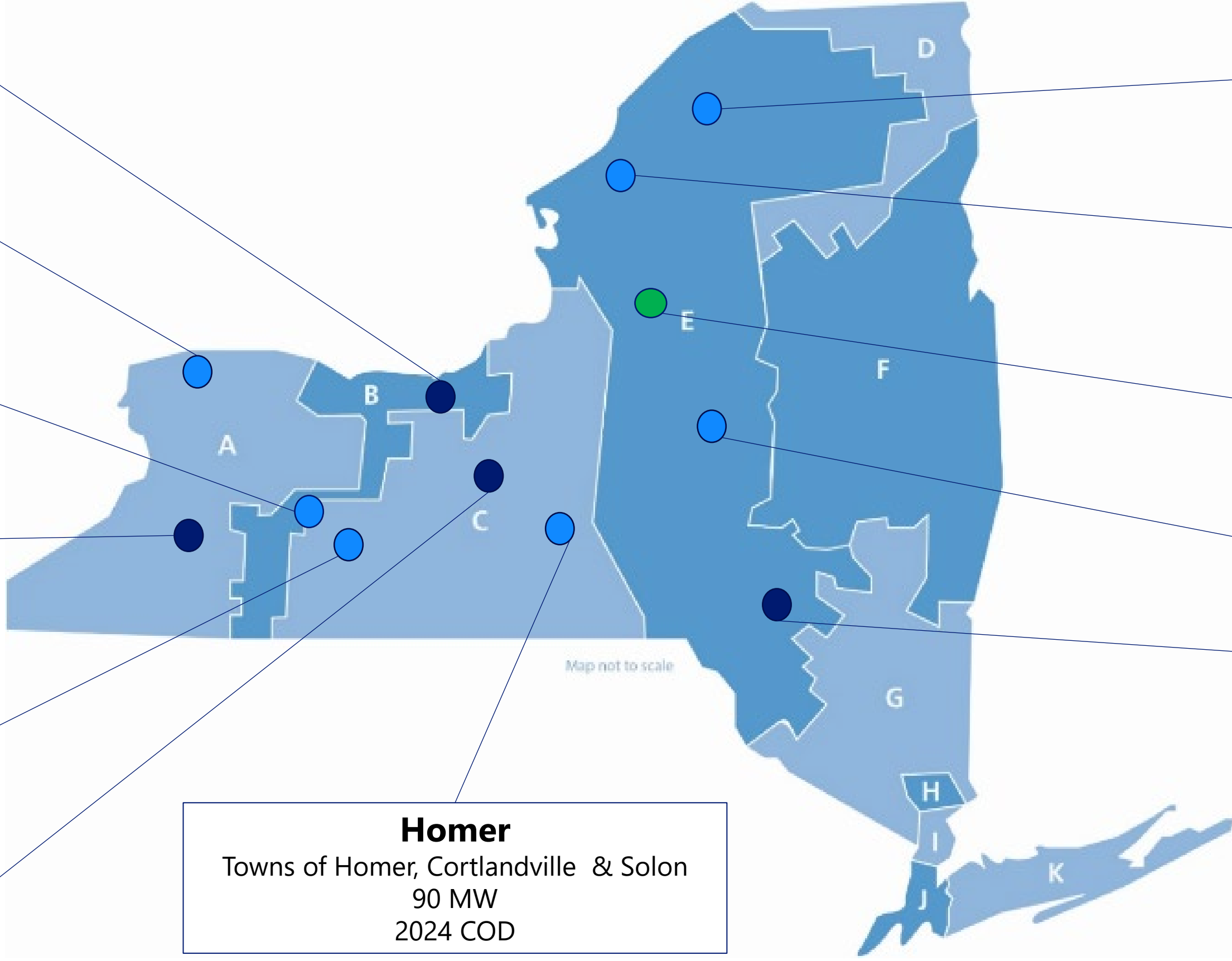
Ridge View
Towns of Hartland and Newfane
350 MW + 20 MW Energy Storage
2025 COD

Morris Ridge
Town of Mt. Morris, 177 MW
2023 COD

Genesee Road
Towns of Concord and Sardinia
350 MW
2025 COD

Moraine
Towns of Burns
94 MW
2024 COD

Suffragette
Town of Seneca Falls
50 MW
2025 COD



Rich Road
Town of Canton
240 MW + 20 MW Energy Storage
2025 COD

Tracy
Towns of Clayton and Orleans
119 MW
2024 COD

Copenhagen Wind
Town of Denmark
80 MW (**in service since 2018**)

Columbia
Town of Columbia and Solon
350 MW
2025 COD

Fraser
130 MW
Energy Storage
2026 COD

Wayland
Town of Wayland
125 MW
2026 COD

Homer
Towns of Homer, Cortlandville & Solon
90 MW
2024 COD

In Development
 NYSERDA Contract
 Online

PROJECT OVERVIEW

Host Town: Towns of Columbia and Litchfield

Host County: Herkimer County

Proposed Capacity: 350 MWac Solar, 20MW/4hr Battery Energy Storage System

Proposed Land Use: ~ 2,200 acres

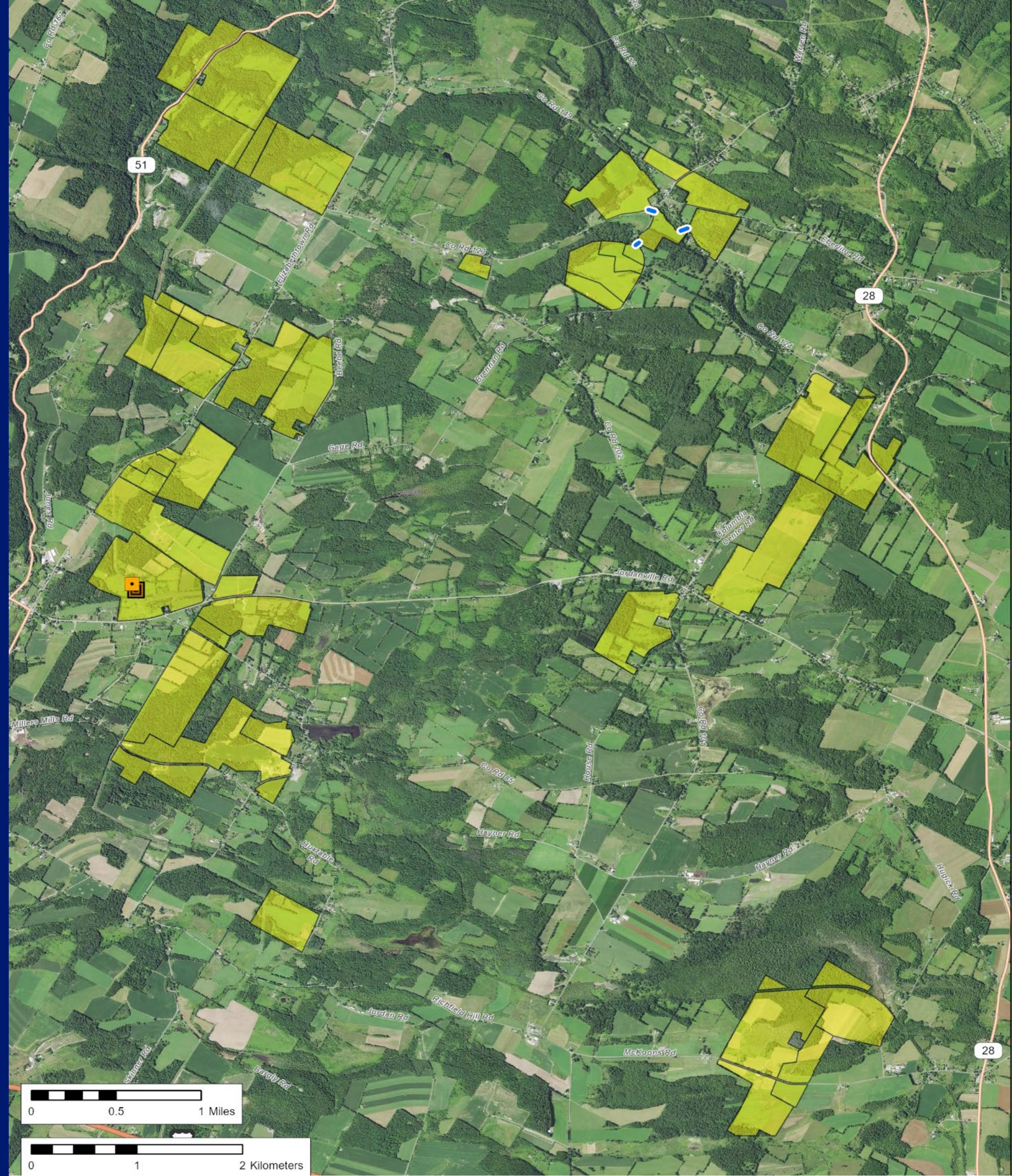
Proposed Interconnection Point:

The Facility will interconnect to the New York power grid via a new Point of Interconnection (POI) in the Town of Columbia, tapping into the New York Power Authority's 'Edic to Fraser' 345 kilovolt ("kV") transmission lines which run through the project area.



FACILITY AREA

- Project will be comprised of about 2,200 acres of solar array including setbacks, driveways, and vegetative buffering.
- Shown in yellow are the parcels with agreements currently signed.
- Additional land may be added to optimize the project and avoid environmental constraints like wetlands and, stormwater, road use, and areas with high slopes.
- Panels will be strategically placed to minimize and avoid environmental and visual impacts.
- As design progresses, more detailed drawings will be provided for public view.

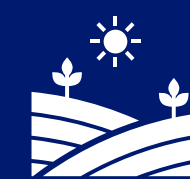
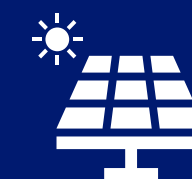


NYSERDA Request For Proposal Updates

- EDFR bid the Columbia Solar project in 2019 but it was not selected.
- EDFR bid the project again in 2021 with additional signed land, progress made in engineering & permitting, and environmental studies completed.
- The state recently announced that the **Columbia Solar Energy Center has been awarded** a 2021 NYSERDA procurement contract.
- ***What's Next?*** Project Design, Studies, and Permitting will continue until the project applies to the state permitting process.

New York's Renewable Energy Goals

- The State of New York has a goal of reaching 70% renewable energy by 2030
- Solar projects engage in these goals through NYSERDA (New York State Energy Research & Development Authority) contracting directly with renewable energy projects, through an annual procurement process
- The State has outlined a plan to continue to procure an estimated 3,000-4,000MW per year of renewables
- As a result of these procurements, NYSERDA may sell the renewable energy credits to state's utilities to comply with Renewable Portfolio Standard



→
EDF
Renewables'
Annual Impact

We take pride in the impact of the **1,163 MW** that we put into service in 2021.



395,040
equivalent homes powered



2,174,819
avoided metric tons of carbon dioxide annually



472,979
cars off the road

Data: EPA Greenhouse Gas Equivalencies Calculator



2021 Safety Results North America



0.64 TRIR

Total Recordable Incident Rate = (# of recordable incidents) / (hrs * 200k)



0.45 DART

Days Away, Restricted or Transferred = (# of days away, restrictions, job transfers) / (hrs * 200k)



2,259,615 hours

Worked by employees



21% decrease in hazardous waste generation tonnage from 2020 to 2021.



329% increase in recycled tonnage from 2020 to 2021.

WASTE MANAGEMENT REDEFINED

2018

0.95 TRIR
0.76 DART

2019

0.77 TRIR
0.54 DART

2020

0.65 TRIR
0.57 DART

SOLAR FARM EQUIPMENT

- **Modules:** Crystalline silicon solar panels, around 750,000 panels.
- **Single Axis Trackers:** panels are mounted on single-axis tracker racking system. The system sits on driven steel piles, with **no concrete**. Panels track the sun from east in the morning to west in the evening. In their tallest configuration, 9-10 feet tall.
- **Inverters & Transformers:** Inverter/transformer units convert DC electricity from modules to AC electricity. Inverters positioned on the interior of arrays and are around 20' x, 8' and 9' tall.
- **Collector Line:** underground cable buried 42-48" below ground. Connects inverters back to the substation. Deeper burial and specialized methods to crossroads and/or wetlands. Overhead lines are only used when required.
- **Substation:** Combines all collector lines and increases voltage to grid-level; connects to existing transmission lines. Located as far as practical from homes to eliminate sound and visual impact.



Racking mounted on piles



Panels installed on racking



Project substation (grid tie)



Inverter/Transformer Skid



Aerial view of project



Land is revegetated

Solar Energy= Emissions Free Power

Safe and non-toxic materials

The modules are comprised of silicon, copper, and aluminum between glass and plastic with an aluminum frame. These types of solar modules cannot release any toxic materials.

No risk for the environment

Inverters and Transformers used to condition power for use on the grid do not contain heavy metals or toxins. Even during a malfunction or when damaged, no environmental risk is present.

No pesticides or herbicides are used in solar array areas unless mandated by environmental agencies

- For example; if invasive plant species were to develop in the area
- Within substations, herbicide are required by code to ensure plants do not grow into electrical equipment & cause a fire.

FENCING, ROADS & SETBACKS

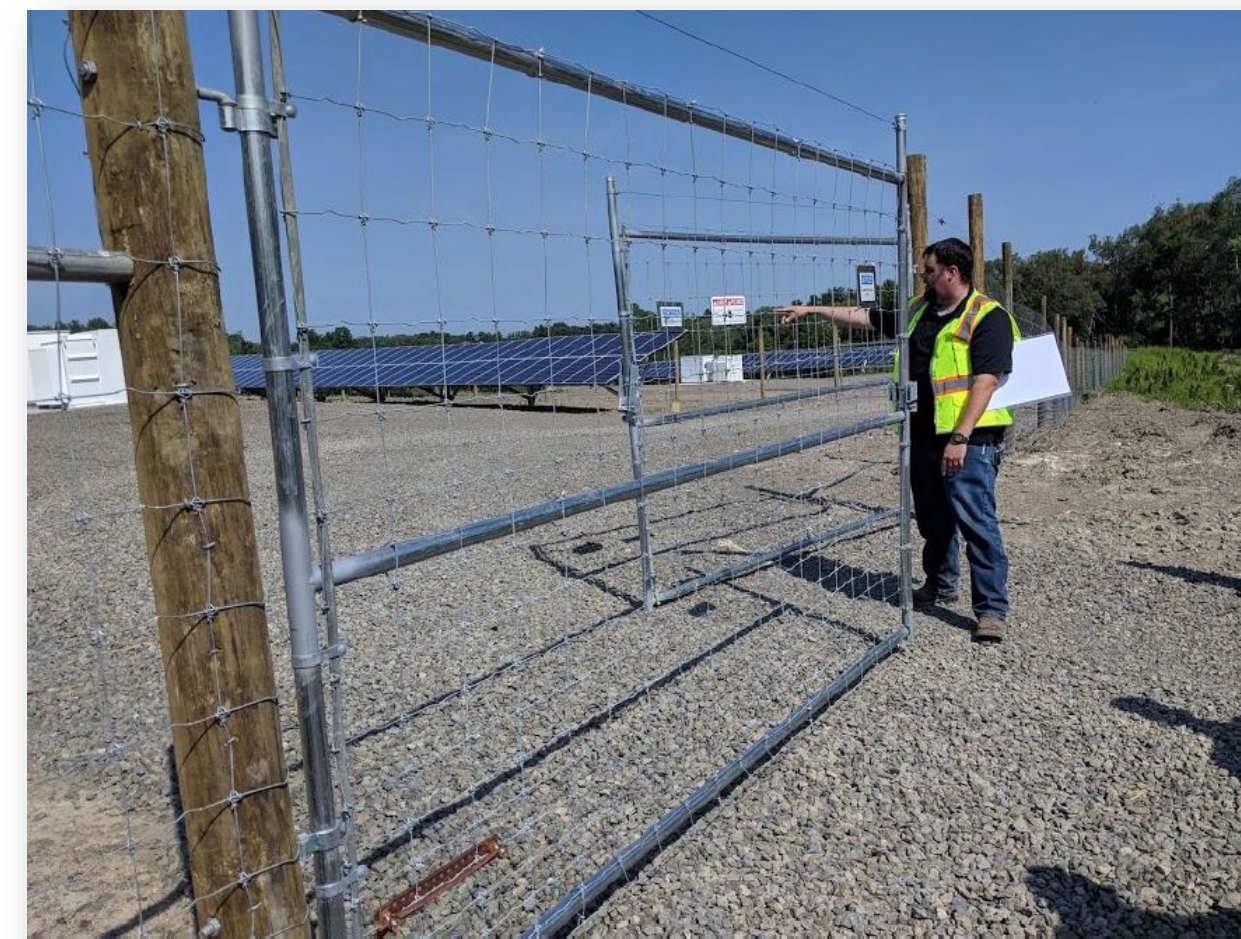
- Fencing is required for solar facilities for safety and security purposes
- 7' tall agricultural style fencing with either steel or wood poles are used for array areas
- 25' wide gate with Knox box for emergency services access
- Fence styles are typically based on examples within the local community to blend into the existing landscape
- Driveways and roads are typically gravel with geofabric 15' wide and constructed to support an 80,000 pound fire truck or delivery truck. Turn-arounds at key locations.



Agricultural Style Wire Knot Fence (Array Areas)



Galvanized Chain Link W/ Barbed Wire (Substation Only)



Typical Access Gate for Array Areas



Typical Access Road for Array Areas

Setback Type	Solar Facility Setback
Non-participating residential property lines	100 feet
Centerline of Public Roads	50 feet
Non-participating property lines (non-residential)	50 feet
Non-participating occupied residences	250 feet

Site Design - Photos



EDFR's Panton Project in Construction in Vermont



EDFR's Pendleton Project in Ontario Modules facing West towards the sun around 4pm
~ 6 month old vegetative buffer in foreground



Driven pile foundations being installed at EDFR's project in Jacksonville FL



One section of array at EDFR's Project in Flambeau, WI

SITE DESIGN

- Plantings along fence-lines can help integrate a solar facility with the surrounding landscape
- While not all boundary edges will possess vegetative screening, residential views will be heavily considered through the design and planting phases

Evergreen Hedges

- Vegetation may include a screening hedge made up of evergreen trees and shrubs

Native & Pollinator-Friendly Plantings

Use of native shrubs and plantings softens the overall visual effect of the facility and provides wildlife benefits

Vegetative Screening

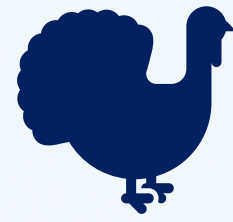
- Approaches to site design for solar projects include selection of fencing and planting materials intended to screen or soften views of the project from adjacent residences.





Hunting Around a Solar Facility

COLUMBIA 
solar + storage project



Hunters are safe and responsible, and we trust them around our facilities



As such, there is no required setback or restriction on hunting around our projects, of course with the landowner's permission

Click to add text



Maintain best practices and use common sense to prevent firing into the project



Communication is key – contact phone numbers posted in visible areas to reach our operations team 24/7/365 and speak to a live voice

New York State Permitting Process for Large Scale Renewable Energy Projects

Is achieved through Section 94c and the **Office of Renewable Energy Siting (ORES)**

- Standardized conditions for solar projects to meet.
- Very high level of environmental studies, design, engineering, including more detailed design and engineering
- Early coordination on environmental impacts & reports required
- Adherence to substantive provisions of local zoning laws still required but a waiver for those deemed unreasonably burdensome.
- One-year timeline for approval following a completeness determination (roughly 60-120 days following an application)
- For Columbia Solar, a \$350,000 fund for intervenors & towns to participate in the process and hire experts & attorneys is available



PROJECT TIMELINE

2019- 2021

- Land Acquisition
- Environmental studies
- Public meeting in person
- Public Meeting Virtual

2022

- Spring Public Meeting
- Fall Public Meeting
- Additional Environmental studies
- Complete land acquisition and optimization

2023

- Early 2023 submit 94c application
- Spring 94c application completeness review
- Spring 94c intervenor funding
- Fall 94c 60 day public comment period

2024

- Early 2024 final 94c determination and compliance
- Spring 2024 Construction begins

2025

- Construction
- Site work begins
- Agrivoltaic COOP formation

2026

Commercial
Operation

*****PUBLIC ENGAGEMENT CONTINUES THROUGHOUT THE PROJECT LIFECYCLE*****



ENVIRONMENTAL AGENCY COORDINATION

- EDF Renewables will be coordinating with regulatory agencies to ensure that potential environmental impacts are fully considered
- Studies provide information to EDF Renewables and coordination agencies to help avoid and minimize potential environmental impacts.

EDF Renewables will coordinate with many agencies, including but not limited to:

- NYS Department of Public Service (NYSDPS)
- NYS Department of Environmental Conservation (NYSDEC)
- NYS Department of Agriculture and Markets (NYSDAM)
- State Historic Preservation Office (NYSHPO),
- NYS Department of Transportation (NYSDOT)
- U.S. Army Corps of Engineers
- Herkimer County Department of Planning
- Herkimer County Department of Public Safety
- Herkimer County Soil and Water Conservation District
- Zoning Boards, Planning Boards, and Fire Departments



ENVIRONMENTAL STUDIES

- Environmental studies inform: the design process, ways to avoid and minimize potential impacts, and confirms presence of wildlife and plant species.
- Mapping of these features and reports of the studies will be submitted to ORES for evaluation.

Acoustic Studies

- Noise during construction and operation of a solar project is minimal and mostly associated with electrical equipment such as invertors
- The largest sound emitting equipment is the substation and battery storage facility, which we will work to locate as far from homes and other neighbors as possible
- Modeling studies will predict the combined sound levels of the background and the facility

Visual Assessment

- Consultation with stakeholders on areas of sensitive visibility, from which photographs will be taken during leaf-off conditions looking toward the facility
- Studies will map potential visibility and prepare visual simulations to illustrate what the final facility design and inform vegetative buffers for roads and neighbors

Archeology

- Visual observations by archaeologists to determine presence or absence of cultural material
- Shovel testing consists of digging shallow pits and sifting soil through wire mesh to look for cultural material not visible on the surface

Wetlands

- Field crews of wetland biologists identify and delineate wetlands and streams based on soil types, vegetation, and hydrology and record the dimensions of these features using Global Positioning System (GPS) technology

Rare / Threatened / Endangered Species

- Field crews of biologists walk an area to identify protected plant and wildlife habitats using Graphical Information Systems and GPS technology to map the locations in real-time



STORMWATER MANAGEMENT

EDF Renewables will implement a Stormwater Pollution Prevention Plan to protect streams and wetlands during construction.

COLUMBIA 
solar + storage project

EDF Renewables will implement the following best management practices for managing stormwater runoff:

- Coordinate with state and local agencies
- Minimize areas of grading, excavating and clearing
- Silt fencing along borders of construction areas to protect nearby streams and wetlands
- Keep vehicles and equipment inside the fenced areas
- Stabilized Construction Entrances to reduce or eliminate the tracking of sediment onto public ROWs, streets, parking lots or driveways.
- Dust Control to prevent surface and air movement of dust from disturbed soil surfaces
- Stockpile topsoil away from waterbodies
- Revegetate disturbed areas in phases, as soon as possible after construction activities are complete
- Revegetation for stream and wetland restoration using perennial native conservation seed mixes
- Final restoration to pre-construction conditions

Acoustics & Noise Modeling

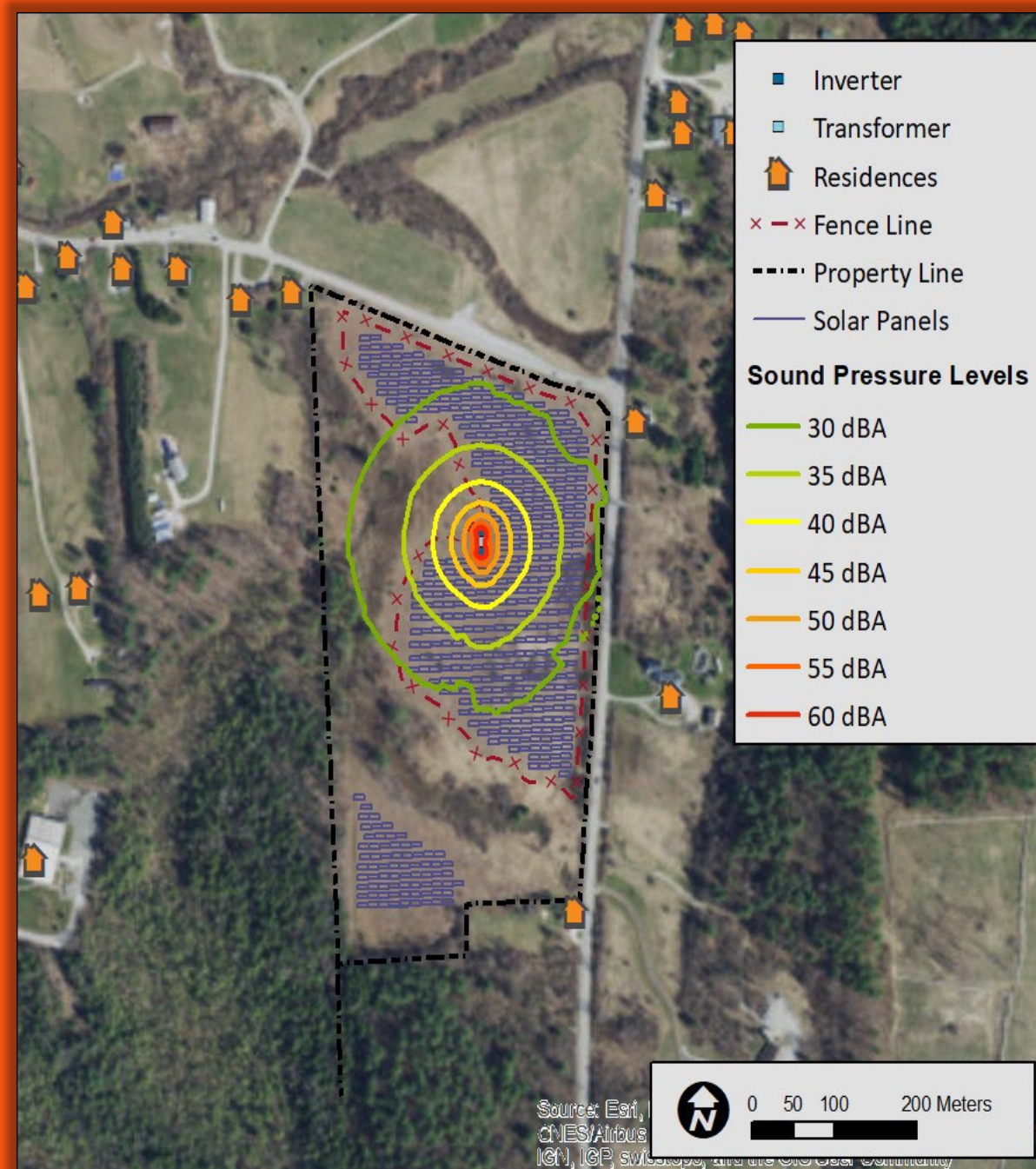
NOISE IMPACT ASSESSMENT

EDF Renewables will conduct a noise assessment to assure that the project is compatible with the surrounding area. The assessment includes:

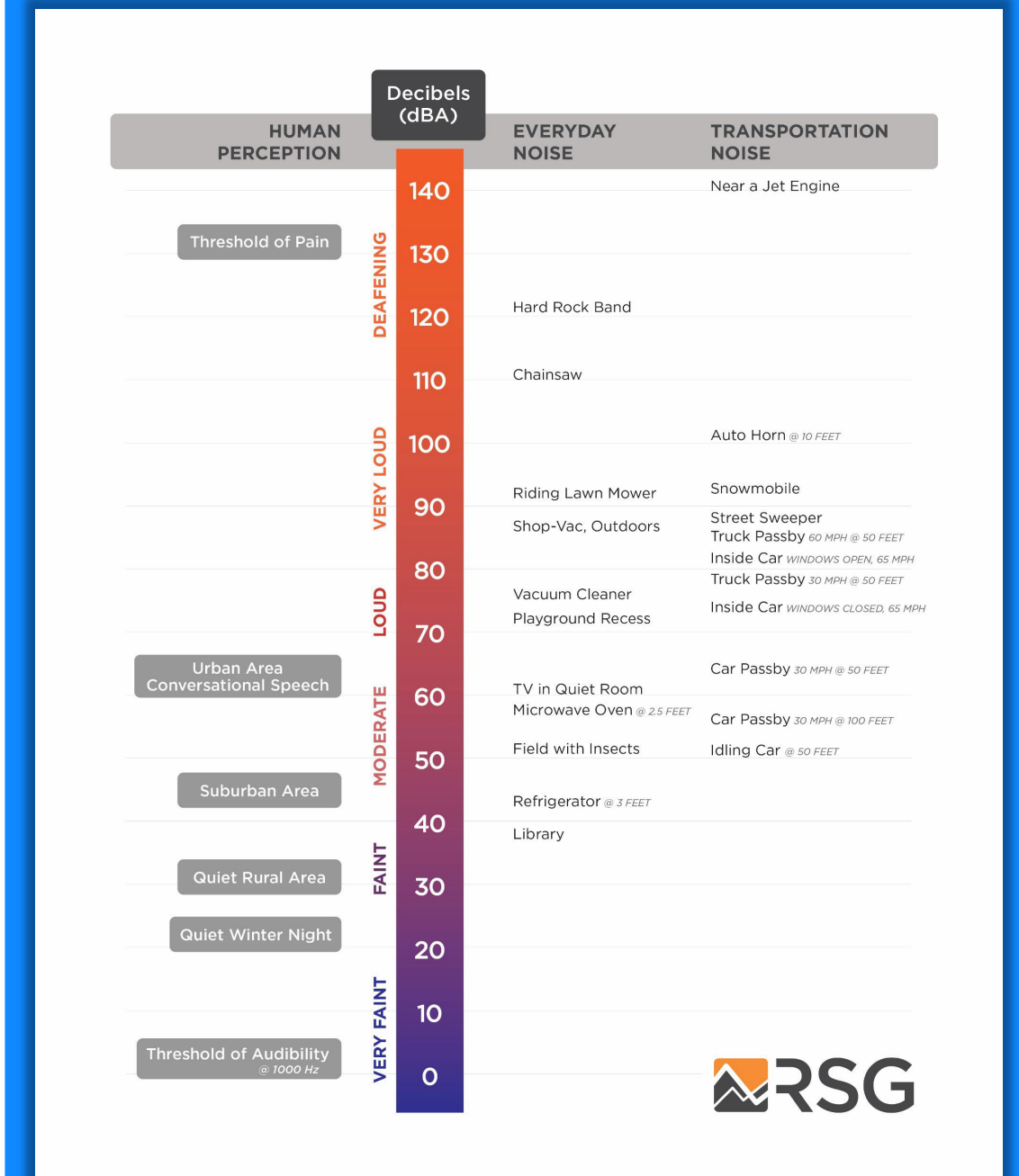
- Background sound level monitoring to assess existing sound levels
- Sound propagation modeling to project future sound levels
- Development of mitigation recommendations to ensure that the project is in compliance with meeting applicable noise limits
- Compliance with 94-c noise requirements

Equipment	Sound Generation
Solar Panels	The panels do not generate any sound
Inverters	These convert DC to AC current and generate some sound during the day
Transformers	These increase the voltage for collection and distribution and generate some sound day and night
Substation	Some noise day and night. Requirement to be less than 30 dBA at nearest receptor
Energy Storage	Some noise day and night. Requirement to be less than 30 dBA at nearest receptor

Sample Sound Map



Common Sound Sources & Levels



THE OPPORTUNITY OF RENEWABLE ENERGY

Currently solar jobs support **more than 231,000 Families**. That number is expected to grow 4x

Average **annual growth rate of 50%** of the last 10 years

Generates enough electricity to power more than **18.6 million homes**

Solar generation **offsets more than 116 million metric tons** of CO2 emissions every year



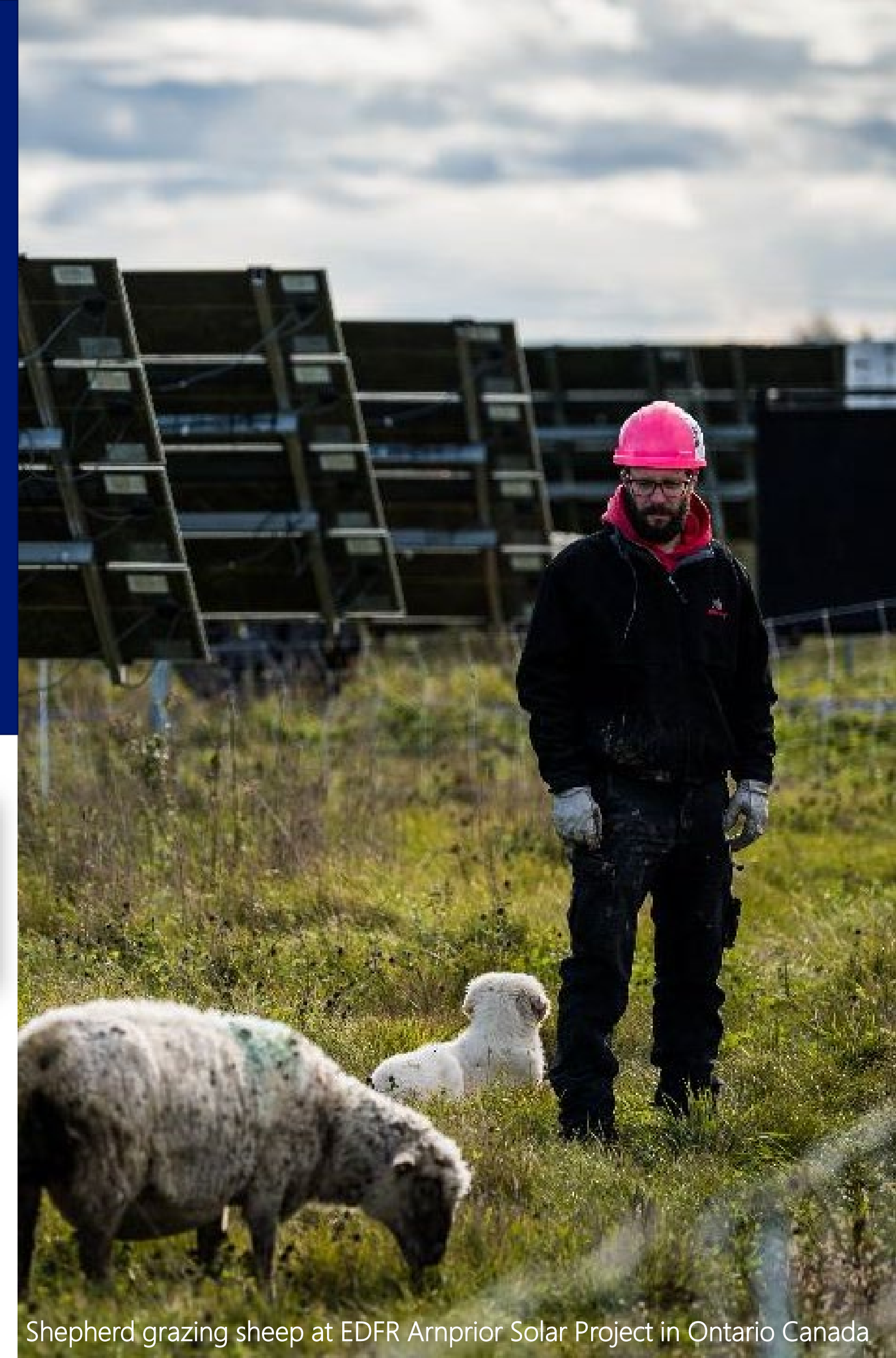
**CLEAN ENERGY
EMPLOYMENT
GROWTH**

16%
2015 through 2019

3.2%
between 2018 and 2019

3X FASTER than overall employment
growth rate in New York
nearly 3X FASTER than national clean
energy job growth rate

Data and Photo taken from NYSERDA 2020 Clean Job Report and SEIA Solar Industry Facts



Shepherd grazing sheep at EDFR Arnprior Solar Project in Ontario Canada

Arnprior Solar Project: Agrivoltaic Success Story

On a 23.4 MW solar project outside of Ottawa Canada EDFR has successfully integrated:

- **Monarch butterfly habitat**
- **Pollinator Habitats**
- **Sheep Grazing (Lambscaping)**

Each of these features brings biodiversity and a variety of environmental benefits, including increased carbon sequestration



100 pregnant ewes brought to site in mid-May



About 10 lambs born every day



For the first time, farmer will be able to sell grass-fed, free-range lamb



By end of June, ~ 300 sheep on site



"We've been able to grow our flock every year, and in 2021, we took on a second site for EDFR. We expect to lamb 500+ ewes in 2022, which is wonderful!"
- Chris, Shady Creek Lamb

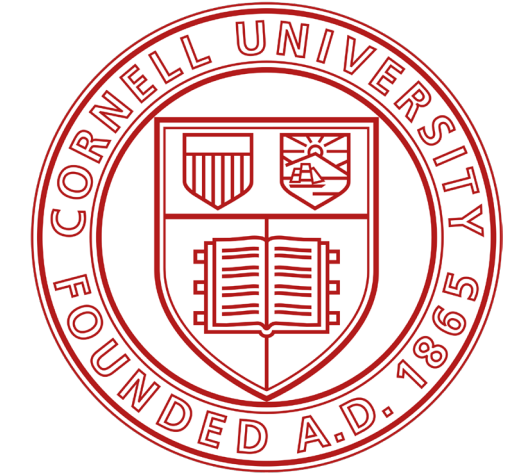


Bees produce 350 jars of honey annually

This partnership offers the opportunity to grow the farmer's business while reducing mechanical mowing – a true win-win!

Columbia Agrivoltaic Collective

A comprehensive study produced by students from Cornell University



Overview of Projects

Columbia Solar Energy Center

- A **350 MW project** located in the **towns of Columbia and Litchfield** in Herkimer County, New York
- Located on approximately **2,000 acres of leased land**, offering a **stable source of income for local landowners and families**

Columbia Agrivoltaic Collective

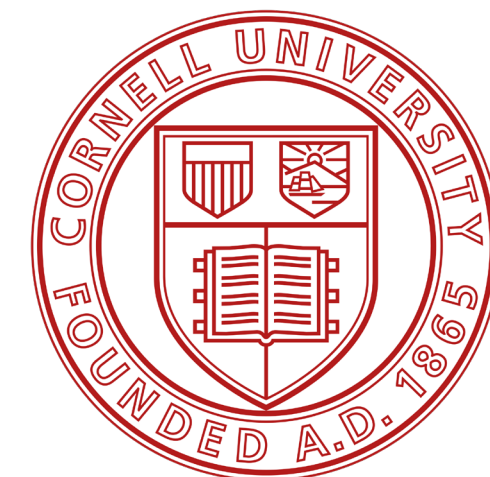
- **Dual use of land** for traditional farming practices and solar PV arrays to create **additional economic opportunity and environmental benefits**, as well as **preserve the character of communities**
- The Columbia Agrivoltaic Collective **is what is being proposed**



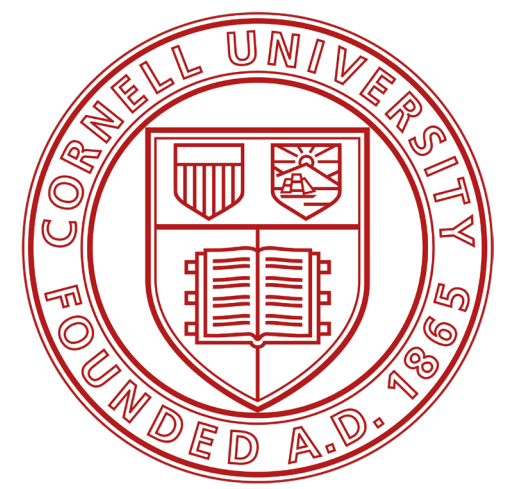
✓ One of the most experienced solar operators in the world

Columbia Agrivoltaic Collective

✓ One of the leading agricultural institutions in the world



Suggestions on How EDFR and NY Farmers Can Work Together



Sheep grazing, cattle grazing, and vegetable farming are a few of the many ways that EDFR and NY farmers can collaborate

1

Sheep Grazing

- As both browsers and grazers, **sheep keep vegetation growth below the panels under control**, substituting for more costly control methods such as herbicides or mechanical weed removal, **reducing maintenance costs**
- The sheep offers a **second revenue stream** for the farmer, as meat or wool from the sheep can be a **profitable enterprise in addition to payments from the solar contract**

2

Cattle Grazing

- The two most likely opportunities would be an **organic dairy operation**, which requires cattle to graze during the growing season, or a cow-calf beef operation
- **Cattle would benefit from grazing underneath the panels**, as the shade would reduce heat-stress
- For a grazing dairy operation, cool season grasses such as Orchard grass, tall fescue, and perennial ryegrass would **offer high quality, shade tolerant forages for the cows**
- On the other hand, a beef operation poses **fewer logistical challenges**

3

Vegetable Farming

- **Seedlings of shade tolerant species**, such as several leafy salad greens, could **be transplanted from nearby high tunnels to rows** between or partially under the solar panels
- The smaller equipment used with vegetable farming would **be easier to integrate with the solar structure**
- By being partially shaded, **evaporation rates would be lower under the panels, potentially reducing water usage**. This could have the **downside of worsening excessive moisture conditions** during some times of the year

NYS - Contributions to Siting and Agrivoltaics

Leading the Conversation

Member of NYSDERDA Agricultural Technical Working Group

Cross-sector group creating a scorecard to minimize disruption of prime farmland and facilitating responsible development where unavoidable.
For use in future procurements.

Member of the Solar Leasing Project advisory board

Multi-university led 3-year project developing state and regional guidance for solar energy agreements and large installations on farmland

Cornell Extension Solar Consortium

Developing a certification system to recognize smart siting and agricultural integration. Working with Cornell extensions throughout the state to create on a wide array of agrivoltaic projects including the Columbia Solar Agrivoltaic COOP.

EDFR North American Agri PV Correspondent

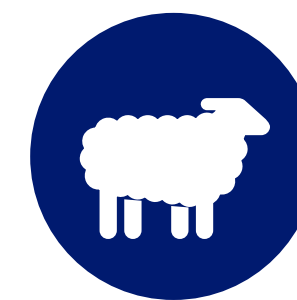
Facilitating quarterly internal networking calls to share information and create awareness (Participation includes Asset Optimization and France)

Project Leadership

Proactive discussions within project communities to stimulate agrivoltaics – forming of local committees investigating optimizing of local benefits and partnerships

Chairing ACE NY Solar Siting Committee

Preparing letter campaign for community stakeholders to provide support letters to key state personnel and legislators



Collaborated with the **Town of Mount Morris** on a first of its kind study for **economics and market demand for hosting sheep and bees** on large scale solar project



Scan for the Mount Morris Study

Study can also be found on columbiasolarproject.com under the resources tab!



DECOMMISSIONING AND REMOVAL



- Decommissioning is the process of removing equipment (solar panels, inverters, transformers) and improvements (roads and fences) and returning the land to original condition
- Decommissioning of the project is planned from the start, expected in year ~35-40 of the project's life
- 94C Permit & local laws require a security, typically in the form of a letter of credit, to be posted to cover the cost to decommission the facility, prior to the start of operation
 - The Host Communities and the State will have access to this letter of credit
 - The amount will be adjusted based on inflation over time
- Where the land was previously used for agriculture, any topsoil that was removed or disturbed during the construction, operation or decommissioning of the solar facility is replaced, aerated, and the land can be returned to farming



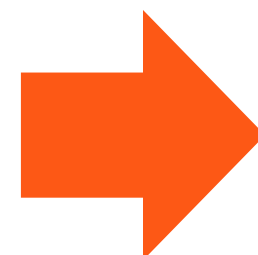
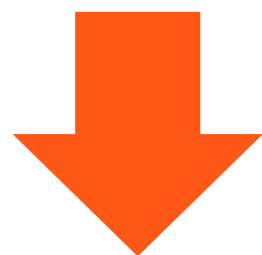
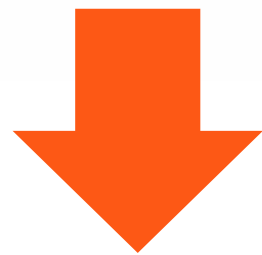
ENERGY STORAGE & SAFETY

Battery storage, or battery energy storage systems (BESS), are devices that enable energy from renewables, like solar and wind, to be stored and then released when customers need power most.



- Project will include energy storage batteries located near the substation.
- 40x8 ft enclosures will include battery module packs made of lithium-ion batteries – same technology that powers cell phones and electric vehicles
- Columbia solar will require 32 enclosures on approximately one acre of land, located near the substation, far from any nearby homes
- Each enclosure is equipped with a monitoring system and automatic shut off systems for enhanced safety.
- No additional fire safety or emergency response gear is needed, and training is provided to local response teams

Basics Of Lithium-Ion Battery Storage Systems

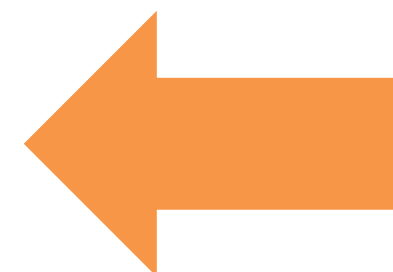


- Individual lithium-ion modules form battery packs, these packs are aligned in rows in a container- similar shape and size to a shipping container
- Each container is equipped with HVAC, control systems, and fire suppression units
- Containers join to form Energy Storage Systems

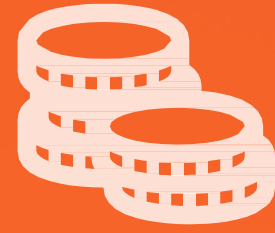
OPERATIONS SAFETY



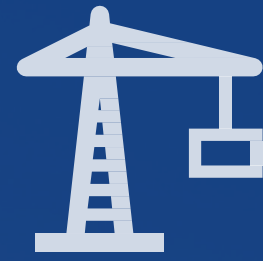
- EDF Renewables will have a local team of operations personnel to monitor and maintain the system to the highest of standards.
- Site Security and Safety Response Plans will be prepared with feedback from the first responder community.
- Training of Local First Responders prior to installation and annually thereafter.
- The facility **will be monitored** 24/7 365 days per year from operations control center in San Diego California.
- Maintain electronic cyber and physical security perimeter requirements.
- Disaster Recovery plan in place to mitigate remote monitoring impacts, including redundant co-location servers, backup power to support 48-72 hours of power should there be a local utility outage and network connectivity redundancy.



EDF Renewables' 24/7 NERC-compliant operations control center located in San Diego, CA, where remote monitoring, diagnostics, troubleshooting, and cybersecurity measures are implemented for all wind and solar power farms under operation



Total project cost anticipated
~ \$550 million
Priority on locally sourced
labor and material



Approximately
300 jobs
anticipated during the peak
of construction.
Commitment to prevailing
wage and union labor.



Estimated
5 Full Time, highly
skilled, high paying
positions created
through life of project



Contribute around
\$27 million in
direct revenues
for local municipalities,
schools, and
Herkimer County over the
project's first 20 years

LOCAL BENEFITS

DIRECT BENEFITS:

- Surveying, civil engineering, mechanical work, electrical work, road construction, transportation equipment, earthwork activities, maintenance of vehicle fleet, maintenance paths, snow removal and other related services.

INDIRECT BENEFITS:

- Meals and accommodation for construction personnel; products, services and supplies.

New Revenues for the Community

Long Term Stable Tax Agreements

- Split between Towns, County and Schools
- Covers value of the project's equipment
- Based on other projects in Central NY and the market for PILOT agreements, we estimate approximately \$1.2 million in year 1 and increasing over time
- Increase in local revenues with no additional municipal costs
- With NYS 2% tax cap, potential to lower taxes for all taxpayers

Increased Tax Revenues on Land

- As agricultural exemption is removed, a 5-year tax payment equal to the amount of the exemption is paid – estimated at more than \$75,000
- Going forward, land is assessed at full value, resulting in a boost to the tax base – estimated to be more than \$50,000/year

Special District Taxes

- Large contributions by the project so special district tax rolls, ex: Fire Departments, Light Districts, etc. as applicable to the project lands.
- Special district taxes estimated between \$50,000-\$75,000 per year, lowering these taxes for all other taxpayers.



Sharing the Sun Fund

- \$40,000 per year for the initial 10 years of the project
- Run by members of the community with the help of the local project team
- Donations chosen by local community representatives
- Distribute funds to local civic groups, nonprofits, projects, or other beneficial community programs in the Towns of Columbia and Litchfield

Host Community Electricity Benefit

- \$175,000 per year for the initial 10 years of the project.
- This payment is split between all residential electricity customers in the host towns

COMMUNITY ENGAGEMENT



2021 Landowner Dinner

2021 Efforts: donated to United Way Herkimer County, Herkimer County Hunger Coalition, Catholic Charities of Herkimer County. Member of local Chamber of Commerce. Scholarships provided to SUNY Morrisville for students in their renewable energy program.

2022 Efforts:

- **\$2,000 Clean Energy and Trades Scholarship** to each Mount Markham, Central Valley and Richfield Central School Districts
- **Cornell University Agrivoltaic Study:** students from Cornell developed a Columbia Agrivoltaic Collective business model and organization plans
- **Herkimer County Summer Youth Employment Camp Project** (ages 16-20) youth will be employed locally working on a project to benefit the community
- **SUNY ESF and LiUNA Workforce Development Program** for solar technicians and laborers: will be an approved pre-apprenticeship pathway into LiUNA and the Columbia Solar Project, coming late 2022/2023



CONTACT INFORMATION

Jack Honor

Director of Development
Jack.honor@edf-re.com

Josh Bennett

Developer
(518) 755-6445
josh.bennett@edf-re.com

Haylee Ferington

Community Relations Manager
haylee.ferington@edf-re.com

1-(833) 333-7369

NewYorkSolar@edf-re.com

