

BULL TRAIL

wind project

SPRING 2018

ABOUT THE PROJECT

The proposed Bull Trail Wind Power Project (the Project) of up to 300 megawatts (MW), is located south of the hamlet of Irvine in [Cypress County, Alberta](#). EDF Renewables will seek the necessary approvals for the Project from the Alberta Utilities' Commission (AUC), the Alberta Electric System Operator (AESO), Alberta Environment and Parks (AEP) and Cypress County.

The Project team has been engaging with community members, local First Nations, local government officials and local businesses to ensure that the final Project design is socially, environmentally and economically sustainable. As part of our continuing consultation process throughout development, we will advise stakeholders prior to submitting our application to the AUC in Q3 2019.

OPEN HOUSE

We invite you to come out and learn more about the Bull Trail Wind Power Project at our first community open house. Refreshments will be served.

We hope to see you there!

THURSDAY, JUNE 14, 2018

5:00 - 8:00 PM

Irvine & District Agricultural Society
207 Francis Street, Irvine, AB T0J 1V0

KEY PROJECT DETAILS



Wind Turbines

The Project will consist of 65 to 100 turbines with a capacity of 3 MW to 4.5 MW per turbine. Each turbine will have a hub height of up to approximately 130 metres (m) and have a rotor diameter of up to 160 m.



Collector System

Each turbine will be linked to the Project substation by a medium voltage collector system. The collector system will be buried underground, wherever practical. The location of the Project collector substation has not been determined at this time.



Interconnection

The Project is planning on interconnecting to the existing 240 kilovolt (kV) transmission system in the area that is operated by AltaLink.



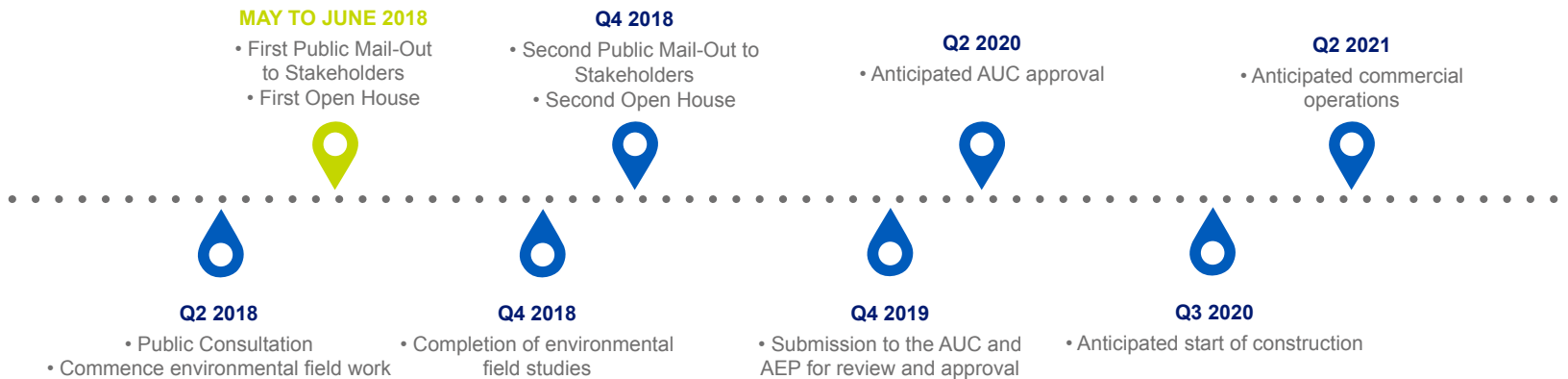
Access Roads and other facilities

During development and operations of the Project, existing municipal roads will be used to access the Project site, wherever practical. There will also be an operation and maintenance building located on or near the Project boundary. We will work with Cypress County to develop a road-use agreement. During construction, a temporary lay down area may also be required.



Meteorological towers

A number of temporary meteorological towers have already been installed at the Project site to measure wind speed, wind direction, air temperature, and barometric pressure. Permanent meteorological towers will be installed for monitoring during the operational phase.



WHY WIND, WHY NOW?

- Alberta is changing the mix of power generation to include a [larger portion of renewable energy](#) in the province including wind and solar.
- The Alberta Electric System Operator intends to encourage the development of renewable power through a competitive procurement process called the [Renewable Electricity Program \(REP\)](#).
- The current REP rounds have a targeted in-service date of June 30, 2021.
- Following the completion of the first competitive bidding process, the Alberta Electric System Operator (AESO) [launched REP Rounds 2 & 3 of the program in March 2018](#). The second round of the REP includes 300 MW of renewable electricity and the third round will procure up to 400 MW.
- We intend to submit the Bull Trail Wind Power Project in either REP 2 or REP 3.

ENVIRONMENTAL AND TECHNICAL STUDIES UNDERWAY

EDF Renewables has commenced environmental desktop studies for the Project. As development progresses, additional field studies will focus on:

- 0 Wildlife – birds, bats and other wildlife
- 0 Wetlands – mapping and classification
- 0 Noise – initial impact assessment
- 0 Heritage Resources

Throughout the development of the Project, we will work closely with Alberta Environment and Parks to ensure environmental risks are mitigated.





IN YOUR COMMUNITY

Community Benefits

EDF Renewables values the long-term benefits of working with the local community. If the Bull Trail Wind Power Project is constructed, the local community will benefit from the following:

- **Employment opportunities** for the construction and operations of the Project.
- **Contract opportunities** for local businesses.
- **Local investments** into hospitality and construction services during the development, construction and operations phases of the Project.
- **Tax revenues** throughout the life of the Project.
- **Reduction in air pollution.**

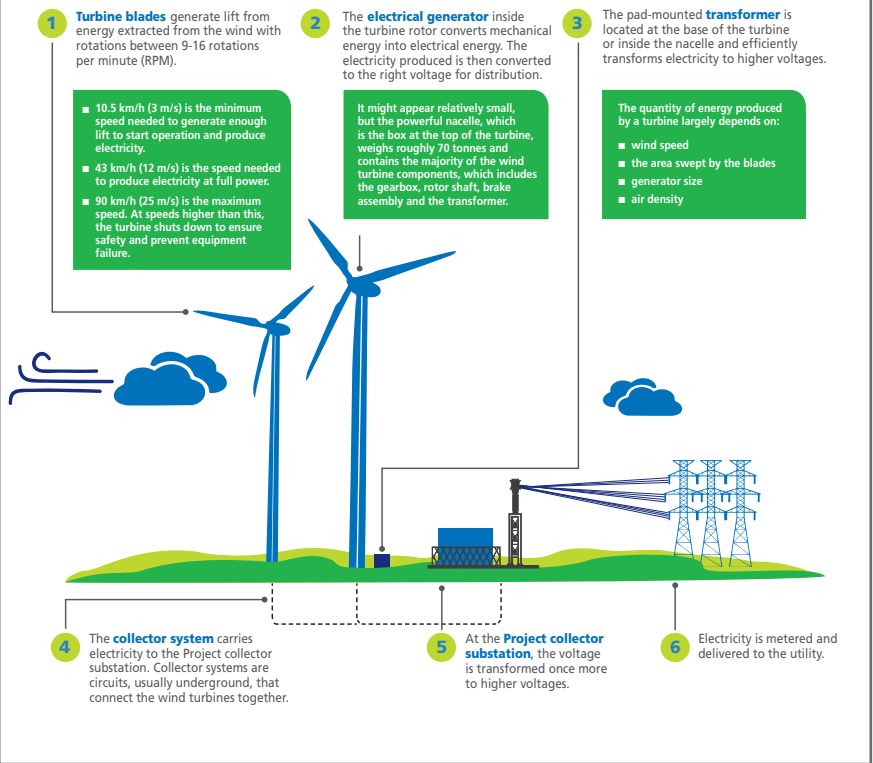
Community Involvement

EDF Renewables believes that every renewable energy project is the beginning of a lasting partnership with the local community. We strive to be a good neighbour and work closely with community members to design our project in a way that is respectful to the needs, heritage and future of Cypress County.

First Nation Engagement

We are committed to sustainable stewardship of our natural resources and value the unique traditions and culture of Indigenous communities. As part of this commitment, we will engage with potentially impacted communities to better understand their traditions and priorities.

HOW WIND WORKS



ABOUT EDF RENEWABLES

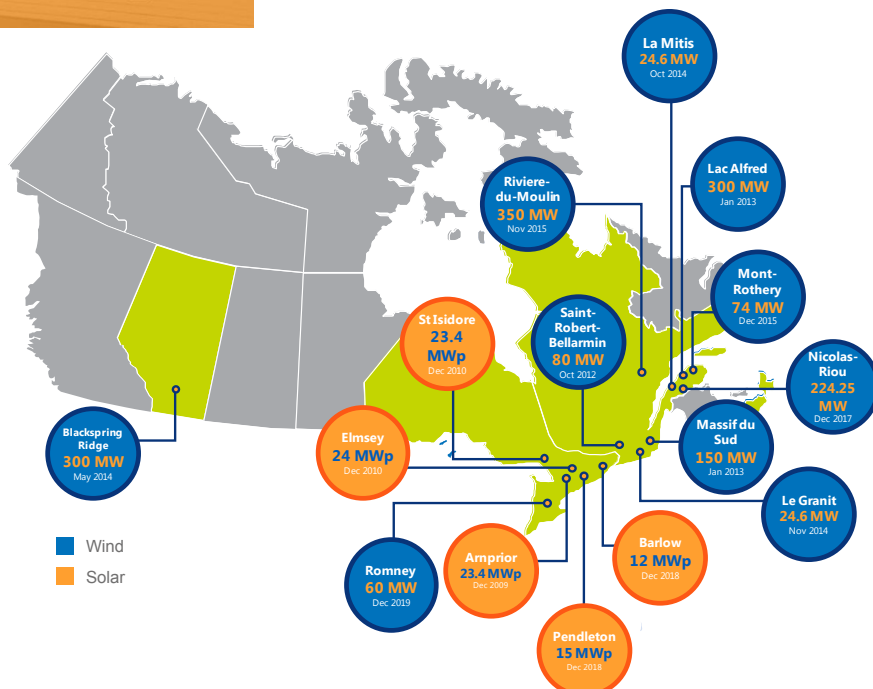
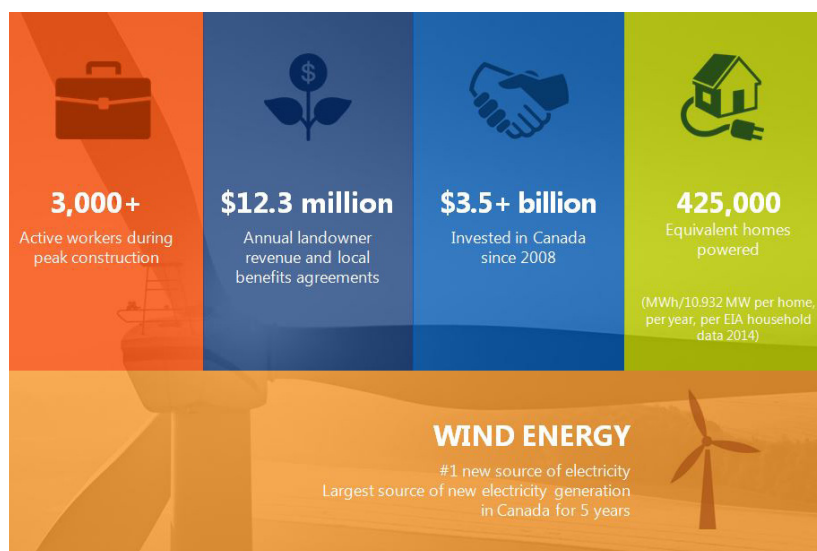
EDF Renewables is a green energy pioneer and market leader with over 1,680 MW of wind and solar energy in varying stages of development, active construction and operation across Canada. We develop, design, build and operate renewable energy projects that harness the earth's renewable resources.



The EDF Group is a global leader in low carbon energy with activities ranging from power generation, transmission and distribution, to trading and retail.

EDF Renewables is the global renewable energy affiliate of the EDF Group. Present in 20+ countries, under the brand EDF Renewables, the company develops, builds and operates renewable power plants. EDF Renewables North America is a market leading independent power producer and service provider with over 30 years of experience. The Company delivers **utility scale power**: wind (onshore and offshore), solar photovoltaic, and storage projects; **distributed solutions**: solar, solar+storage, EV charging and energy management; and **asset optimization**: technical, operational, and commercial skills to maximize performance of generating projects.

1,680+ MW Put into Service, Under Construction or In Development



EDF Renewables
53 Jarvis Street, Suite 300
Toronto, ON M5C 2H2
1-844-55-EDF-EN / 1-844-553-3336
www.edf-re.ca

CONTACT US

www.bulltrail.ca
bulltrailwind@edf-re.com
844-55-EDF-EN / 844-553-3336